

Product datasheet for **TA315884**

SYT16 Rabbit Polyclonal Antibody

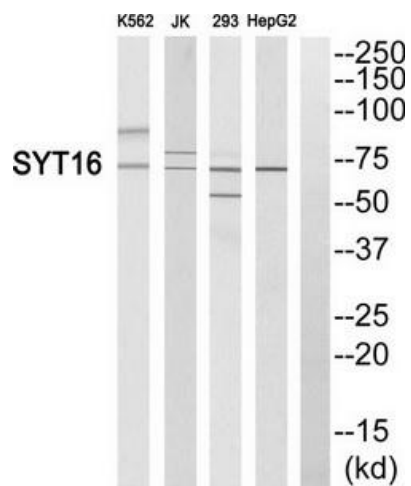
Product data:

Product Type:	Primary Antibodies
Applications:	WB
Recommended Dilution:	WB: 1:500~1:3000, ELISA: 1:40000
Reactivity:	Human
Host:	Rabbit
Isotype:	IgG
Clonality:	Polyclonal
Immunogen:	The antiserum was produced against synthesized peptide derived from internal of human SYT16.
Formulation:	Phosphate buffered saline (without Mg ²⁺ and Ca ²⁺), pH 7.4, 150mM NaCl, 0.02% sodium azide and 50% glycerol.
Concentration:	lot specific
Purification:	The antibody was affinity-purified from rabbit antiserum by affinity-chromatography using epitope-specific immunogen.
Conjugation:	Unconjugated
Storage:	Store at -20°C as received.
Stability:	Stable for 12 months from date of receipt.
Gene Name:	synaptotagmin 16
Database Link:	NP_114120 Entrez Gene 83851 Human Q17RD7
Synonyms:	CHR14SYT; Strep14; SYT14L; syt14r; yt14r
Note:	SYT16 antibody detects endogenous levels of total SYT16 protein.



[View online »](#)

Product images:



Western blot analysis of extracts from K562 cells, Jurkat cells, 293 cells and HepG2 cells, using SYT16 antibody. The lane on the right is treated with the synthesized peptide.