

Product datasheet for **TA315883**

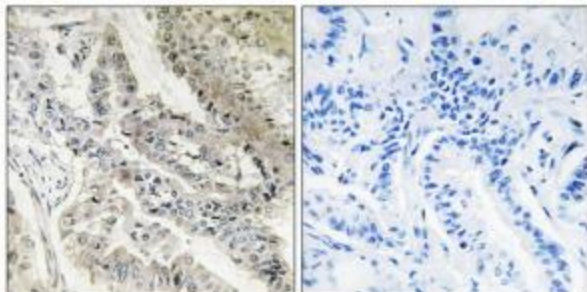
RBP5 Rabbit Polyclonal Antibody

Product data:

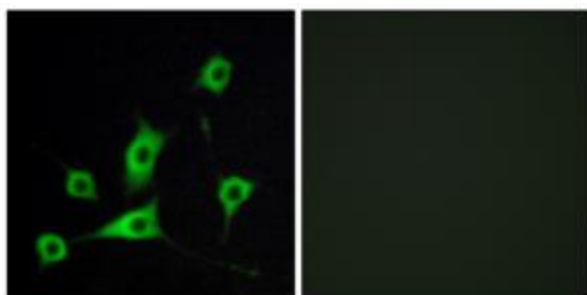
Product Type:	Primary Antibodies
Applications:	IF, IHC
Recommended Dilution:	IHC: 1:50~1:100, IF: 1:100~1:500, ELISA: 1:20000
Reactivity:	Human
Host:	Rabbit
Isotype:	IgG
Clonality:	Polyclonal
Immunogen:	The antiserum was produced against synthesized peptide derived from internal of human CRBP III.
Formulation:	Phosphate buffered saline (without Mg ²⁺ and Ca ²⁺), pH 7.4, 150mM NaCl, 0.02% sodium azide and 50% glycerol.
Concentration:	lot specific
Purification:	The antibody was affinity-purified from rabbit antiserum by affinity-chromatography using epitope-specific immunogen.
Conjugation:	Unconjugated
Storage:	Store at -20°C as received.
Stability:	Stable for 12 months from date of receipt.
Gene Name:	retinol binding protein 5
Database Link:	NP_113679 Entrez Gene 83758 Human P82980
Synonyms:	CRBP-III; CRBP3; CRBPIII; HRBPiso
Note:	CRBP III antibody detects endogenous levels of total CRBP III protein.



[View online »](#)

Product images:

Immunohistochemistry analysis of paraffin-embedded human lung carcinoma tissue, using CRBP III antibody. The picture on the right is treated with the synthesized peptide.



Immunofluorescence analysis of LOVO cells, using CRBP III antibody. The picture on the right is treated with the synthesized peptide.