

## Product datasheet for **TA315881**

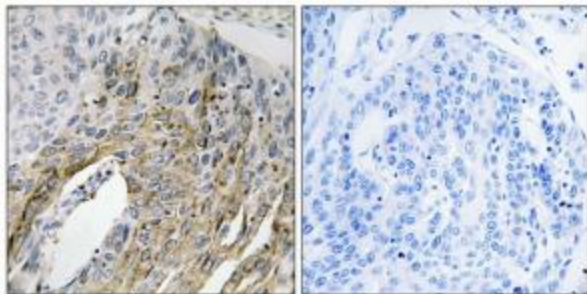
### LONP2 Rabbit Polyclonal Antibody

#### Product data:

Product Type:	Primary Antibodies
Applications:	IHC
Recommended Dilution:	IHC: 1:50~1:100, ELISA: 1:40000
Reactivity:	Human, Mouse, Rat
Host:	Rabbit
Isotype:	IgG
Clonality:	Polyclonal
Immunogen:	The antiserum was produced against synthesized peptide derived from internal of human LONP2.
Formulation:	Phosphate buffered saline (without Mg <sup>2+</sup> and Ca <sup>2+</sup> ), pH 7.4, 150mM NaCl, 0.02% sodium azide and 50% glycerol.
Concentration:	lot specific
Purification:	The antibody was affinity-purified from rabbit antiserum by affinity-chromatography using epitope-specific immunogen.
Conjugation:	Unconjugated
Storage:	Store at -20°C as received.
Stability:	Stable for 12 months from date of receipt.
Gene Name:	Ion peptidase 2, peroxisomal
Database Link:	<a href="#">NP_113678</a> <a href="#">Entrez Gene 66887 Mouse</a> <a href="#">Entrez Gene 291922 Rat</a> <a href="#">Entrez Gene 83752 Human</a> <a href="#">Q86WA8</a>
Synonyms:	LONP; LONPL
Note:	LONP2 antibody detects endogenous levels of total LONP2 protein.
Protein Families:	Druggable Genome, Protease



[View online »](#)

**Product images:**

Immunohistochemistry analysis of paraffin-embedded human lung carcinoma tissue using LONP2 antibody. The picture on the right is treated with the synthesized peptide.