

Product datasheet for **TA315878**

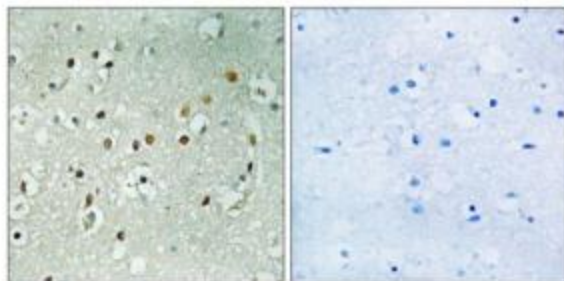
RPS6KL1 Rabbit Polyclonal Antibody

Product data:

Product Type:	Primary Antibodies
Applications:	IHC
Recommended Dilution:	IHC: 1:50~1:100, ELISA: 1:40000
Reactivity:	Human
Host:	Rabbit
Isotype:	IgG
Clonality:	Polyclonal
Immunogen:	The antiserum was produced against synthesized peptide derived from internal of human RPS6KL1.
Formulation:	Phosphate buffered saline (without Mg ²⁺ and Ca ²⁺), pH 7.4, 150mM NaCl, 0.02% sodium azide and 50% glycerol.
Concentration:	lot specific
Purification:	The antibody was affinity-purified from rabbit antiserum by affinity-chromatography using epitope-specific immunogen.
Conjugation:	Unconjugated
Storage:	Store at -20°C as received.
Stability:	Stable for 12 months from date of receipt.
Gene Name:	ribosomal protein S6 kinase like 1
Database Link:	NP_113652 Entrez Gene 83694 Human Q9Y6S9
Synonyms:	RSKL2
Note:	RPS6KL1 antibody detects endogenous levels of total RPS6KL1 protein.
Protein Families:	Druggable Genome, Protein Kinase



[View online »](#)

Product images:

Peptide

-

+

Immunohistochemistry analysis of paraffin-embedded human brain tissue using RPS6KL1 antibody. The picture on the right is treated with the synthesized peptide.