

Product datasheet for **TA315871**

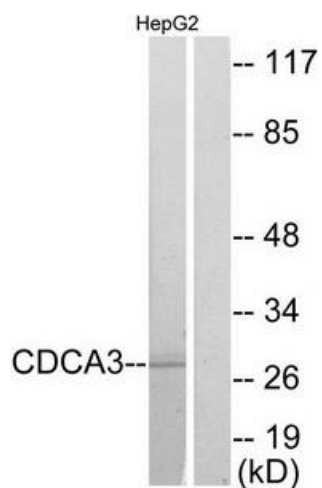
CDCA3 Rabbit Polyclonal Antibody

Product data:

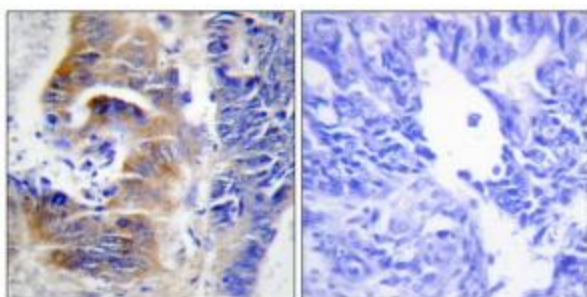
Product Type:	Primary Antibodies
Applications:	IHC, WB
Recommended Dilution:	WB: 1:500~1:3000, IHC: 1:50~1:100, ELISA: 1:1000
Reactivity:	Human, Mouse, Rat
Host:	Rabbit
Isotype:	IgG
Clonality:	Polyclonal
Immunogen:	The antiserum was produced against synthesized peptide derived from C-terminal of human CDCA3.
Formulation:	Phosphate buffered saline (without Mg ²⁺ and Ca ²⁺), pH 7.4, 150mM NaCl, 0.02% sodium azide and 50% glycerol.
Concentration:	lot specific
Purification:	The antibody was affinity-purified from rabbit antiserum by affinity-chromatography using epitope-specific immunogen.
Conjugation:	Unconjugated
Storage:	Store at -20°C as received.
Stability:	Stable for 12 months from date of receipt.
Gene Name:	cell division cycle associated 3
Database Link:	NP_112589 Entrez Gene 14793 Mouse Entrez Gene 297594 Rat Entrez Gene 83461 Human Q99618
Synonyms:	GRCC8; TOME-1
Note:	CDCA3 antibody detects endogenous levels of total CDCA3 protein.



[View online »](#)

Product images:

Western blot analysis of extracts from HepG2 cells, using CDCA3 antibody. The lane on the right is treated with the synthesized peptide.



Immunohistochemistry analysis of paraffin-embedded human colon carcinoma tissue using CDCA3 antibody. The picture on the right is treated with the synthesized peptide.