

Product datasheet for **TA315865**

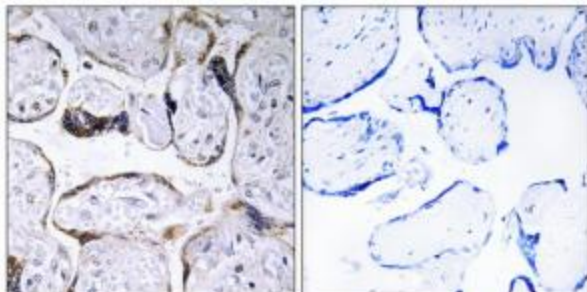
Elongation of very long chain fatty acids protein 3 (ELOVL3) Rabbit Polyclonal Antibody

Product data:

Product Type:	Primary Antibodies
Applications:	IHC
Recommended Dilution:	IHC: 1:50~1:100, ELISA: 1:20000
Reactivity:	Human
Host:	Rabbit
Isotype:	IgG
Clonality:	Polyclonal
Immunogen:	The antiserum was produced against synthesized peptide derived from internal of human ELOVL3.
Formulation:	Phosphate buffered saline (without Mg ²⁺ and Ca ²⁺), pH 7.4, 150mM NaCl, 0.02% sodium azide and 50% glycerol.
Concentration:	lot specific
Purification:	The antibody was affinity-purified from rabbit antiserum by affinity-chromatography using epitope-specific immunogen.
Conjugation:	Unconjugated
Storage:	Store at -20°C as received.
Stability:	Stable for 12 months from date of receipt.
Gene Name:	ELOVL fatty acid elongase 3
Database Link:	NP_689523 Entrez Gene 83401 Human Q9HB03
Synonyms:	CIG-30; CIG30
Note:	ELOVL3 antibody detects endogenous levels of total ELOVL3 protein.
Protein Families:	Transmembrane



[View online »](#)

Product images:

Immunohistochemistry analysis of paraffin-embedded human placenta tissue using ELOVL3 antibody. The picture on the right is treated with the synthesized peptide.