

## Product datasheet for **TA315863**

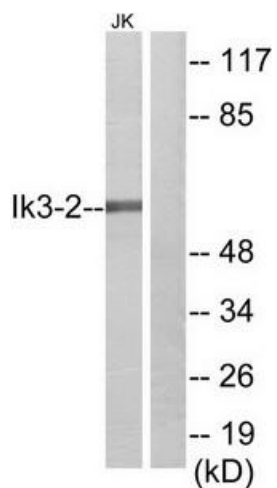
### **CABLES2 Rabbit Polyclonal Antibody**

#### **Product data:**

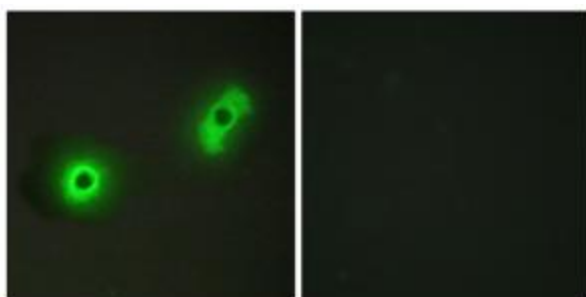
Product Type:	Primary Antibodies
Applications:	IF, WB
Recommended Dilution:	WB: 1:500~1:3000, IF: 1:100~1:500, ELISA: 1:10000
Reactivity:	Human, Mouse
Host:	Rabbit
Isotype:	IgG
Clonality:	Polyclonal
Immunogen:	The antiserum was produced against synthesized peptide derived from internal of human Ik3-2.
Formulation:	Phosphate buffered saline (without Mg <sup>2+</sup> and Ca <sup>2+</sup> ), pH 7.4, 150mM NaCl, 0.02% sodium azide and 50% glycerol.
Concentration:	lot specific
Purification:	The antibody was affinity-purified from rabbit antiserum by affinity-chromatography using epitope-specific immunogen.
Conjugation:	Unconjugated
Storage:	Store at -20°C as received.
Stability:	Stable for 12 months from date of receipt.
Gene Name:	Cdk5 and Abl enzyme substrate 2
Database Link:	<a href="#">NP_112492</a> <a href="#">Entrez Gene 252966 Mouse</a> <a href="#">Entrez Gene 81928 Human</a> <a href="#">Q9BTV7</a>
Synonyms:	C20orf150; dj908M14.2; ik3-2
Note:	Ik3-2 antibody detects endogenous levels of total Ik3-2 protein.

[View online »](#)

## Product images:



Western blot analysis of extracts from Jurkat cells, using Ik3-2 antibody. The lane on the right is treated with the synthesized peptide.



Immunofluorescence analysis of A549 cells, using Ik3-2 antibody. The picture on the right is treated with the synthesized peptide.