

Product datasheet for **TA315859**

PPP1R14C Rabbit Polyclonal Antibody

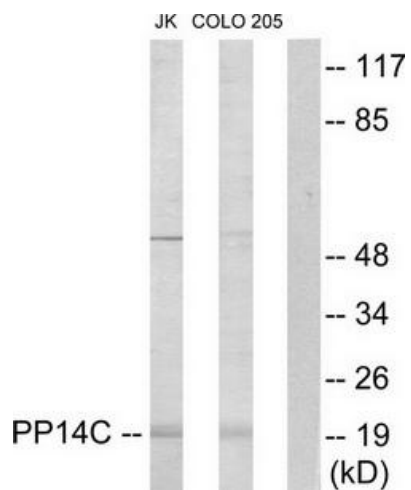
Product data:

Product Type:	Primary Antibodies
Applications:	WB
Recommended Dilution:	WB: 1:500~1:3000, ELISA: 1:20000
Reactivity:	Human, Mouse, Rat
Host:	Rabbit
Isotype:	IgG
Clonality:	Polyclonal
Immunogen:	The antiserum was produced against synthesized peptide derived from internal of human PP14C.
Formulation:	Phosphate buffered saline (without Mg ²⁺ and Ca ²⁺), pH 7.4, 150mM NaCl, 0.02% sodium azide and 50% glycerol.
Concentration:	lot specific
Purification:	The antibody was affinity-purified from rabbit antiserum by affinity-chromatography using epitope-specific immunogen.
Conjugation:	Unconjugated
Storage:	Store at -20°C as received.
Stability:	Stable for 12 months from date of receipt.
Gene Name:	protein phosphatase 1 regulatory inhibitor subunit 14C
Database Link:	NP_112211 Entrez Gene 76142 Mouse Entrez Gene 171010 Rat Entrez Gene 81706 Human Q8TAE6
Synonyms:	CPI17-like; KEPI; NY-BR-81
Note:	PP14C antibody detects endogenous levels of total PP14C protein.
Protein Families:	Druggable Genome



[View online »](#)

Product images:



Western blot analysis of extracts from Jurkat cells and COLO205 cells, using PPP1R14C antibody. The lane on the right is treated with the synthesized peptide.