

Product datasheet for **TA315851**

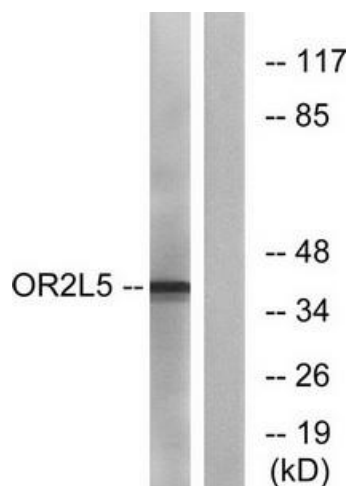
OR2L5 Rabbit Polyclonal Antibody

Product data:

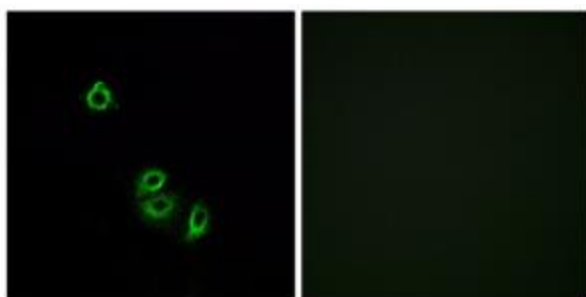
Product Type:	Primary Antibodies
Applications:	IF, WB
Recommended Dilution:	WB: 1:500~1:3000, IF: 1:100~1:500, ELISA: 1:20000
Reactivity:	Human
Host:	Rabbit
Isotype:	IgG
Clonality:	Polyclonal
Immunogen:	The antiserum was produced against synthesized peptide derived from internal of human OR2L5.
Formulation:	Phosphate buffered saline (without Mg ²⁺ and Ca ²⁺), pH 7.4, 150mM NaCl, 0.02% sodium azide and 50% glycerol.
Concentration:	lot specific
Purification:	The antibody was affinity-purified from rabbit antiserum by affinity-chromatography using epitope-specific immunogen.
Conjugation:	Unconjugated
Storage:	Store at -20°C as received.
Stability:	Stable for 12 months from date of receipt.
Gene Name:	olfactory receptor family 2 subfamily L member 5
Database Link:	NP_001245213 Entrez Gene 81466 Human Q8NG80
Synonyms:	OR2L5P; OR2L11
Note:	OR2L5 antibody detects endogenous levels of total OR2L5 protein.



[View online »](#)

Product images:


Western blot analysis of extracts from COLO cells, using OR2L5 antibody. The lane on the right is treated with the synthesized peptide.



Immunofluorescence analysis of A549 cells, using OR2L5 antibody. The picture on the right is treated with the synthesized peptide.