

Product datasheet for **TA315848**

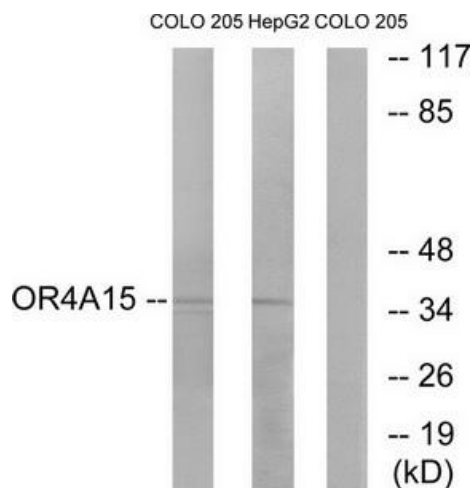
OR4A15 Rabbit Polyclonal Antibody

Product data:

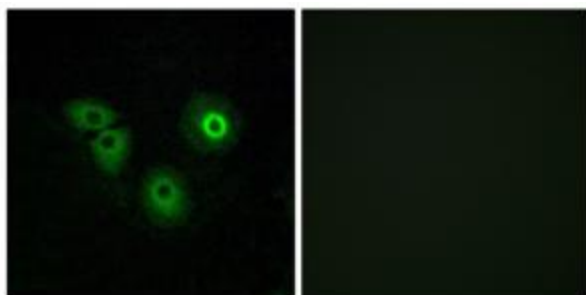
Product Type:	Primary Antibodies
Applications:	IF, WB
Recommended Dilution:	WB: 1:500~1:3000, IF: 1:100~1:500, ELISA: 1:10000
Reactivity:	Human
Host:	Rabbit
Isotype:	IgG
Clonality:	Polyclonal
Immunogen:	The antiserum was produced against synthesized peptide derived from C-terminal of human OR4A15.
Formulation:	Phosphate buffered saline (without Mg ²⁺ and Ca ²⁺), pH 7.4, 150mM NaCl, 0.02% sodium azide and 50% glycerol.
Concentration:	lot specific
Purification:	The antibody was affinity-purified from rabbit antiserum by affinity-chromatography using epitope-specific immunogen.
Conjugation:	Unconjugated
Storage:	Store at -20°C as received.
Stability:	Stable for 12 months from date of receipt.
Gene Name:	olfactory receptor family 4 subfamily A member 15
Database Link:	NP_001005275 Entrez Gene 81328 Human Q8NGL6
Synonyms:	OR11-118
Note:	OR4A15 antibody detects endogenous levels of total OR4A15 protein.
Protein Families:	Transmembrane
Protein Pathways:	Olfactory transduction



[View online »](#)

Product images:


Western blot analysis of extracts from COLO cells and HepG2 cells, using OR4A15 antibody. The lane on the right is treated with the synthesized peptide.



Immunofluorescence analysis of A549 cells, using OR4A15 antibody. The picture on the right is treated with the synthesized peptide.