

## Product datasheet for **TA315840**

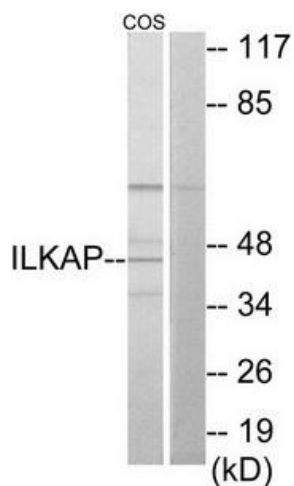
### ILKAP Rabbit Polyclonal Antibody

#### Product data:

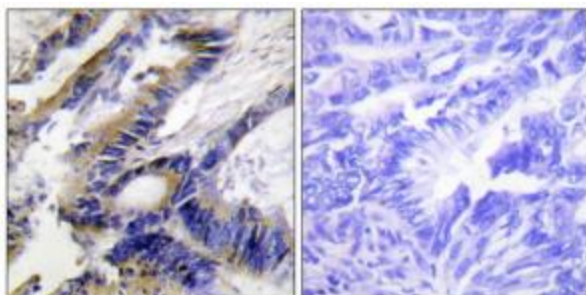
Product Type:	Primary Antibodies
Applications:	IHC, WB
Recommended Dilution:	WB: 1:500~1:3000, IHC: 1:50~1:100, ELISA: 1:20000
Reactivity:	Human, Mouse, Rat
Host:	Rabbit
Isotype:	IgG
Clonality:	Polyclonal
Immunogen:	The antiserum was produced against synthesized peptide derived from internal of human ILKAP.
Formulation:	Phosphate buffered saline (without Mg <sup>2+</sup> and Ca <sup>2+</sup> ), pH 7.4, 150mM NaCl, 0.02% sodium azide and 50% glycerol.
Concentration:	lot specific
Purification:	The antibody was affinity-purified from rabbit antiserum by affinity-chromatography using epitope-specific immunogen.
Conjugation:	Unconjugated
Storage:	Store at -20°C as received.
Stability:	Stable for 12 months from date of receipt.
Gene Name:	ILK associated serine/threonine phosphatase
Database Link:	<a href="#">NP_110395</a> <a href="#">Entrez Gene 64538 Rat</a> <a href="#">Entrez Gene 67444 Mouse</a> <a href="#">Entrez Gene 80895 Human</a> <a href="#">Q9H0C8</a>
Synonyms:	ILKAP2; ILKAP3; PP2C-DELTA; PPM1O
Note:	ILKAP antibody detects endogenous levels of total ILKAP protein.
Protein Families:	Druggable Genome, Phosphatase



[View online »](#)

**Product images:**

Western blot analysis of extracts from COS-7 cells, using ILKAP antibody. The lane on the right is treated with the synthesized peptide.



Immunohistochemistry analysis of paraffin-embedded human colon carcinoma tissue using ILKAP antibody. The picture on the right is treated with the synthesized peptide.