

Product datasheet for **TA315830**

CSP (DNAJC5) Rabbit Polyclonal Antibody

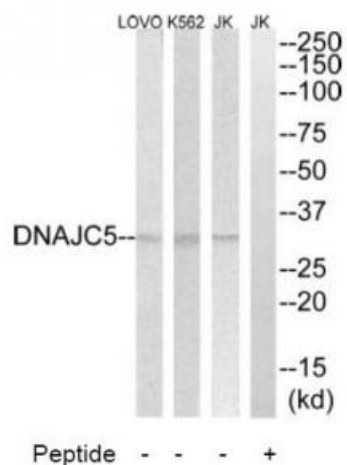
Product data:

Product Type:	Primary Antibodies
Applications:	WB
Recommended Dilution:	WB: 1:500~1:3000, ELISA: 1:10000
Reactivity:	Mouse, Human, Rat
Host:	Rabbit
Isotype:	IgG
Clonality:	Polyclonal
Immunogen:	The antiserum was produced against synthesized peptide derived from internal of human DNAJC5.
Formulation:	Phosphate buffered saline (without Mg ²⁺ and Ca ²⁺), pH 7.4, 150mM NaCl, 0.02% sodium azide and 50% glycerol.
Concentration:	lot specific
Purification:	The antibody was affinity-purified from rabbit antiserum by affinity-chromatography using epitope-specific immunogen.
Conjugation:	Unconjugated
Storage:	Store at -20°C as received.
Stability:	Stable for 12 months from date of receipt.
Gene Name:	DnaJ heat shock protein family (Hsp40) member C5
Database Link:	NP_079495 Entrez Gene 13002 Mouse Entrez Gene 79130 Rat Entrez Gene 80331 Human Q9H3Z4
Synonyms:	CLN4; CLN4B; CSP; DNAJC5A; mir-941-2; mir-941-3; mir-941-4; mir-941-5; NCL
Note:	DNAJC5 antibody detects endogenous levels of total DNAJC5 protein.
Protein Families:	Transmembrane



[View online »](#)

Product images:



Western blot analysis of extracts from Jurkat, K562 and LOVOO cells, using DNAJC5 antibody. The lane on the right is treated with the synthesized peptide.