

Product datasheet for **TA315826**

RUFY1 Rabbit Polyclonal Antibody

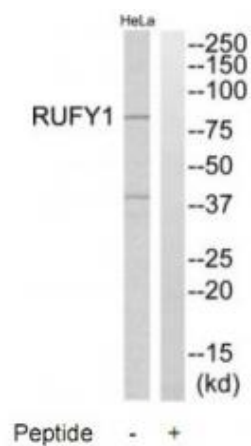
Product data:

Product Type:	Primary Antibodies
Applications:	WB
Recommended Dilution:	WB: 1:500~1:3000, ELISA: 1:10000
Reactivity:	Human, Mouse
Host:	Rabbit
Isotype:	IgG
Clonality:	Polyclonal
Immunogen:	The antiserum was produced against synthesized peptide derived from internal of human RUFY1.
Formulation:	Phosphate buffered saline (without Mg ²⁺ and Ca ²⁺), pH 7.4, 150mM NaCl, 0.02% sodium azide and 50% glycerol.
Concentration:	lot specific
Purification:	The antibody was affinity-purified from rabbit antiserum by affinity-chromatography using epitope-specific immunogen.
Conjugation:	Unconjugated
Storage:	Store at -20°C as received.
Stability:	Stable for 12 months from date of receipt.
Gene Name:	RUN and FYVE domain containing 1
Database Link:	NP_001035541 Entrez Gene 216724 Mouse Entrez Gene 80230 Human Q96T51
Synonyms:	RABIP4; ZFYVE12
Note:	RUFY1 antibody detects endogenous levels of total RUFY1 protein.
Protein Pathways:	Endocytosis



[View online »](#)

Product images:



Western blot analysis of extracts from HeLa cells, using RUFY1 antibody. The lane on the right is treated with the synthesized peptide.