

## Product datasheet for **TA315824**

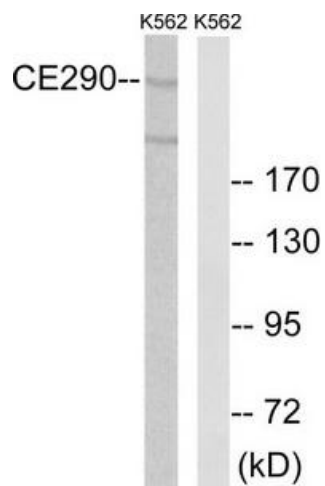
### CEP290 Rabbit Polyclonal Antibody

#### Product data:

Product Type:	Primary Antibodies
Applications:	WB
Recommended Dilution:	WB: 1:500~1:3000, ELISA: 1:20000
Reactivity:	Mouse, Human
Host:	Rabbit
Isotype:	IgG
Clonality:	Polyclonal
Immunogen:	The antiserum was produced against synthesized peptide derived from internal of human CEP290.
Formulation:	Phosphate buffered saline (without Mg <sup>2+</sup> and Ca <sup>2+</sup> ), pH 7.4, 150mM NaCl, 0.02% sodium azide and 50% glycerol.
Concentration:	lot specific
Purification:	The antibody was affinity-purified from rabbit antiserum by affinity-chromatography using epitope-specific immunogen.
Conjugation:	Unconjugated
Storage:	Store at -20°C as received.
Stability:	Stable for 12 months from date of receipt.
Gene Name:	centrosomal protein 290
Database Link:	<a href="#">NP_079390</a> <a href="#">Entrez Gene 216274 Mouse</a> <a href="#">Entrez Gene 80184 Human</a> <a href="#">O15078</a>
Synonyms:	3H11Ag; BBS14; CT87; JBTS5; LCA10; MKS4; NPHP6; POC3; rd16; SLSN6
Note:	CEP290 antibody detects endogenous levels of total CEP290 protein.



[View online »](#)

**Product images:**

Western blot analysis of extracts from K562 cells, using CEP290 antibody. The lane on the right is treated with the synthesized peptide.