

Product datasheet for **TA315821**

GPR157 Rabbit Polyclonal Antibody

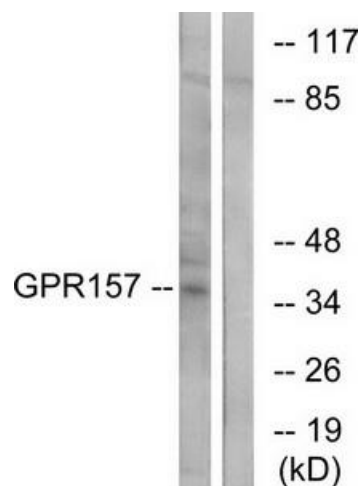
Product data:

Product Type:	Primary Antibodies
Applications:	IF, WB
Recommended Dilution:	WB: 1:500~1:3000, IF: 1:100~1:500, ELISA: 1:5000
Reactivity:	Human
Host:	Rabbit
Isotype:	IgG
Clonality:	Polyclonal
Immunogen:	The antiserum was produced against synthesized peptide derived from internal of human GPR157.
Formulation:	Phosphate buffered saline (without Mg ²⁺ and Ca ²⁺), pH 7.4, 150mM NaCl, 0.02% sodium azide and 50% glycerol.
Concentration:	lot specific
Purification:	The antibody was affinity-purified from rabbit antiserum by affinity-chromatography using epitope-specific immunogen.
Conjugation:	Unconjugated
Storage:	Store at -20°C as received.
Stability:	Stable for 12 months from date of receipt.
Gene Name:	G protein-coupled receptor 157
Database Link:	NP_079256 Entrez Gene 80045 Human Q5UAW9
Synonyms:	FLJ12132
Note:	GPR157 antibody detects endogenous levels of total GPR157 protein.
Protein Families:	Druggable Genome, Transmembrane

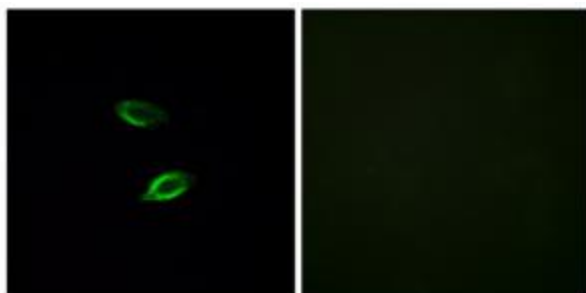


[View online »](#)

Product images:



Western blot analysis of extracts from NIH-3T3 cells, using GPR157 antibody. The lane on the right is treated with the synthesized peptide.



Immunofluorescence analysis of HUVEC cells, using GPR157 antibody. The picture on the right is treated with the synthesized peptide.