

Product datasheet for **TA315820**

FAM130A2 (CSRNP3) Rabbit Polyclonal Antibody

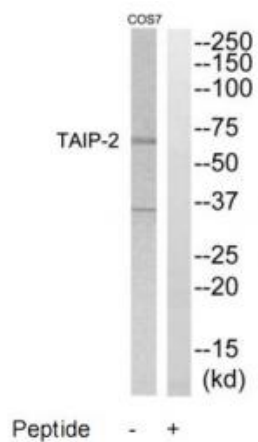
Product data:

Product Type:	Primary Antibodies
Applications:	WB
Recommended Dilution:	WB: 1:500~1:3000, ELISA: 1:20000
Reactivity:	Mouse, Human
Host:	Rabbit
Isotype:	IgG
Clonality:	Polyclonal
Immunogen:	The antiserum was produced against synthesized peptide derived from internal of human TAIP-2.
Formulation:	Phosphate buffered saline (without Mg ²⁺ and Ca ²⁺), pH 7.4, 150mM NaCl, 0.02% sodium azide and 50% glycerol.
Concentration:	lot specific
Purification:	The antibody was affinity-purified from rabbit antiserum by affinity-chromatography using epitope-specific immunogen.
Conjugation:	Unconjugated
Storage:	Store at -20°C as received.
Stability:	Stable for 12 months from date of receipt.
Gene Name:	cysteine and serine rich nuclear protein 3
Database Link:	NP_001165644 Entrez Gene 77771 Mouse Entrez Gene 80034 Human Q8WYN3
Synonyms:	FAM130A2; PPP1R73; TAIP-2; TAIP2
Note:	TAIP-2 antibody detects endogenous levels of total TAIP-2 protein.



[View online »](#)

Product images:



Western blot analysis of extracts from COS7 cells, using TAIP-2 antibody. The lane on the right is treated with the synthesized peptide.