

Product datasheet for **TA315815S**

ADCK4 (COQ8B) Rabbit Polyclonal Antibody

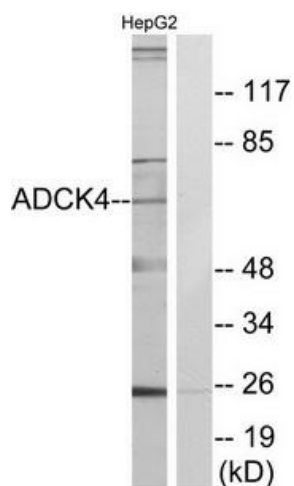
Product data:

| | |
|-----------------------|--------------------------------------------------------------------------------------------------------------------------------------|
| Product Type: | Primary Antibodies |
| Applications: | IF, WB |
| Recommended Dilution: | WB: 1:500~1:3000, IF: 1:100~1:500, ELISA: 1:10000 |
| Reactivity: | Human, Mouse, Rat |
| Host: | Rabbit |
| Isotype: | IgG |
| Clonality: | Polyclonal |
| Immunogen: | The antiserum was produced against synthesized peptide derived from internal of human ADCK4. |
| Formulation: | Phosphate buffered saline (without Mg ²⁺ and Ca ²⁺), pH 7.4, 150mM NaCl, 0.02% sodium azide and 50% glycerol. |
| Concentration: | lot specific |
| Purification: | The antibody was affinity-purified from rabbit antiserum by affinity-chromatography using epitope-specific immunogen. |
| Conjugation: | Unconjugated |
| Storage: | Store at -20°C as received. |
| Stability: | Stable for 12 months from date of receipt. |
| Gene Name: | aarF domain containing kinase 4 |
| Database Link: | NP_001136027 Entrez Gene 76889 MouseEntrez Gene 308453 RatEntrez Gene 79934 Human Q96D53 |
| Synonyms: | NPHS9 |
| Note: | ADCK4 antibody detects endogenous levels of total ADCK4 protein. |
| Protein Families: | Druggable Genome, Protein Kinase |

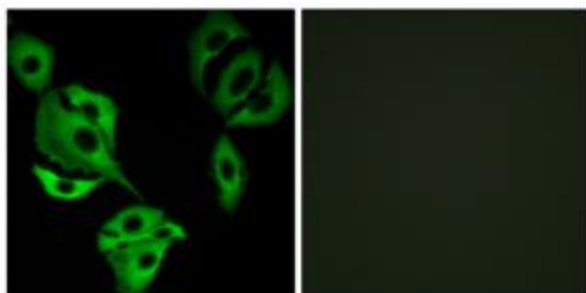


[View online »](#)

Product images:



Western blot analysis of extracts from HepG2 cells, using ADCK4 antibody. The lane on the right is treated with the synthesized peptide.



Immunofluorescence analysis of A549 cells, using ADCK4 antibody. The picture on the right is treated with the synthesized peptide.