

## Product datasheet for **TA315811**

### UBA5 Rabbit Polyclonal Antibody

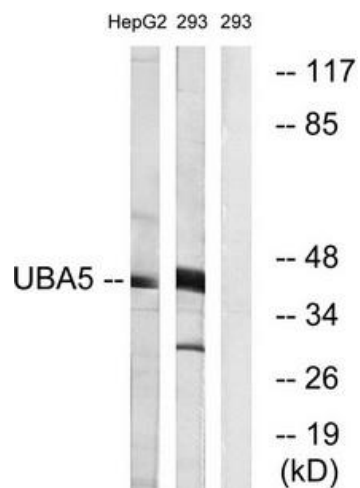
#### Product data:

Product Type:	Primary Antibodies
Applications:	WB
Recommended Dilution:	WB: 1:500~1:3000, ELISA: 1:5000
Reactivity:	Human, Mouse, Rat
Host:	Rabbit
Isotype:	IgG
Clonality:	Polyclonal
Immunogen:	The antiserum was produced against synthesized peptide derived from internal of human UBA5.
Formulation:	Phosphate buffered saline (without Mg <sup>2+</sup> and Ca <sup>2+</sup> ), pH 7.4, 150mM NaCl, 0.02% sodium azide and 50% glycerol.
Concentration:	lot specific
Purification:	The antibody was affinity-purified from rabbit antiserum by affinity-chromatography using epitope-specific immunogen.
Conjugation:	Unconjugated
Storage:	Store at -20°C as received.
Stability:	Stable for 12 months from date of receipt.
Gene Name:	ubiquitin like modifier activating enzyme 5
Database Link:	<a href="#">NP_079094</a> <a href="#">Entrez Gene 66663 MouseEntrez Gene 300968 RatEntrez Gene 79876 Human Q9GZZ9</a>
Synonyms:	THIFP1; UBE1DC1
Note:	UBA5 antibody detects endogenous levels of total UBA5 protein.
Protein Families:	Transmembrane



[View online »](#)

## Product images:



Western blot analysis of extracts from HepG2 cells and 293 cells, using UBA5 antibody. The lane on the right is treated with the synthesized peptide.