

## Product datasheet for **TA315807**

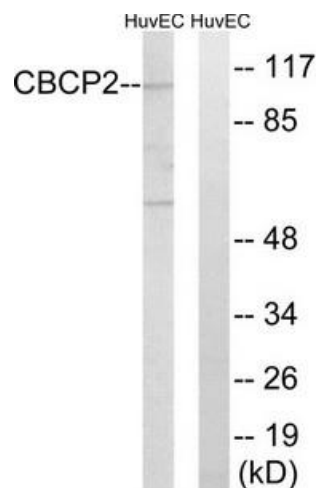
### AGBL2 Rabbit Polyclonal Antibody

#### Product data:

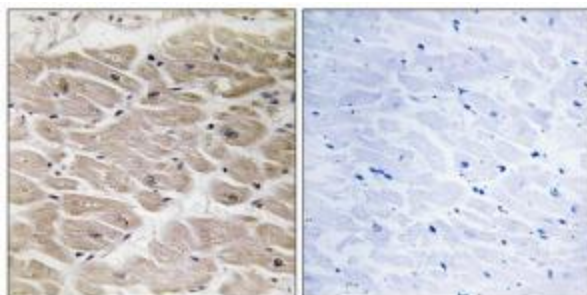
Product Type:	Primary Antibodies
Applications:	IHC, WB
Recommended Dilution:	WB: 1:500~1:3000, IHC: 1:50~1:100, ELISA: 1:40000
Reactivity:	Human, Mouse
Host:	Rabbit
Isotype:	IgG
Clonality:	Polyclonal
Immunogen:	The antiserum was produced against synthesized peptide derived from internal of human CBCP2.
Formulation:	Phosphate buffered saline (without Mg <sup>2+</sup> and Ca <sup>2+</sup> ), pH 7.4, 150mM NaCl, 0.02% sodium azide and 50% glycerol.
Concentration:	lot specific
Purification:	The antibody was affinity-purified from rabbit antiserum by affinity-chromatography using epitope-specific immunogen.
Conjugation:	Unconjugated
Storage:	Store at -20°C as received.
Stability:	Stable for 12 months from date of receipt.
Gene Name:	ATP/GTP binding protein-like 2
Database Link:	<a href="#">NP_079059</a> <a href="#">Entrez Gene 271813 Mouse</a> <a href="#">Entrez Gene 79841 Human</a> <a href="#">Q5U5Z8</a>
Synonyms:	CCP2
Note:	CBCP2 antibody detects endogenous levels of total CBCP2 protein.
Protein Families:	Druggable Genome



[View online »](#)

**Product images:**

Western blot analysis of extracts from HuvEc cells, using CBCP2 antibody. The lane on the right is treated with the synthesized peptide.



Immunohistochemistry analysis of paraffin-embedded human heart tissue, using CBCP2 antibody. The picture on the right is treated with the synthesized peptide.