

Product datasheet for **TA315805**

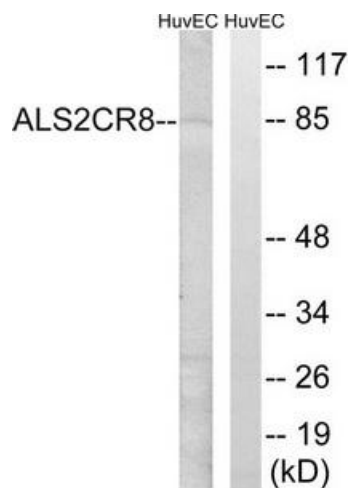
ALS2CR8 (CARF) Rabbit Polyclonal Antibody

Product data:

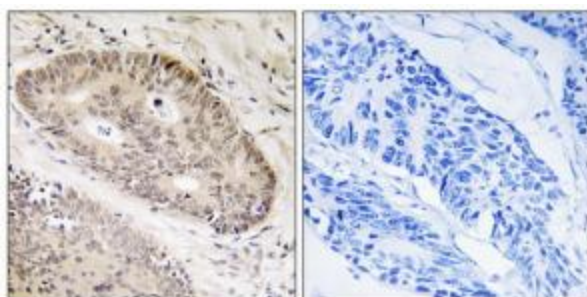
Product Type:	Primary Antibodies
Applications:	IHC, WB
Recommended Dilution:	WB: 1:500~1:3000, IHC: 1:50~1:100, ELISA: 1:40000
Reactivity:	Human
Host:	Rabbit
Isotype:	IgG
Clonality:	Polyclonal
Immunogen:	The antiserum was produced against synthesized peptide derived from internal of human ALS2CR8
Formulation:	Phosphate buffered saline (without Mg ²⁺ and Ca ²⁺), pH 7.4, 150mM NaCl, 0.02% sodium azide and 50% glycerol.
Concentration:	lot specific
Purification:	The antibody was affinity-purified from rabbit antiserum by affinity-chromatography using epitope-specific immunogen.
Conjugation:	Unconjugated
Storage:	Store at -20°C as received.
Stability:	Stable for 12 months from date of receipt.
Gene Name:	calcium responsive transcription factor
Database Link:	NP_001098056 Entrez Gene 79800 Human Q8N187
Synonyms:	ALS2CR8; NYD-SP24
Note:	ALS2CR8 antibody detects endogenous levels of total ALS2CR8 protein.



[View online »](#)

Product images:


Western blot analysis of extracts from HuvEc cells, using ALS2CR8 antibody. The lane on the right is treated with the synthesized peptide.



Immunohistochemistry analysis of paraffin-embedded human lung carcinoma tissue, using ALS2CR8 antibody. The picture on the right is treated with the synthesized peptide.