

Product datasheet for **TA315804**

MYH14 Rabbit Polyclonal Antibody

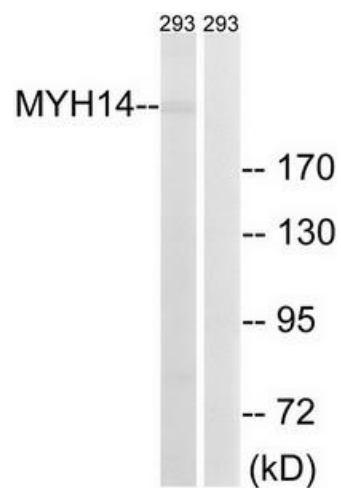
Product data:

Product Type:	Primary Antibodies
Applications:	WB
Recommended Dilution:	WB: 1:500~1:3000, ELISA: 1:5000
Reactivity:	Human, Mouse
Host:	Rabbit
Isotype:	IgG
Clonality:	Polyclonal
Immunogen:	The antiserum was produced against synthesized peptide derived from internal of human MYH14.
Formulation:	Phosphate buffered saline (without Mg ²⁺ and Ca ²⁺), pH 7.4, 150mM NaCl, 0.02% sodium azide and 50% glycerol.
Concentration:	lot specific
Purification:	The antibody was affinity-purified from rabbit antiserum by affinity-chromatography using epitope-specific immunogen.
Conjugation:	Unconjugated
Storage:	Store at -20°C as received.
Stability:	Stable for 12 months from date of receipt.
Gene Name:	myosin, heavy chain 14, non-muscle
Database Link:	NP_001070654 Entrez Gene 71960 Mouse Entrez Gene 79784 Human Q7Z406
Synonyms:	DFNA4; DFNA4A; FP17425; MHC16; MYH17; myosin; NMHC-II-C; NMHC II-C; PNMHH
Note:	MYH14 antibody detects endogenous levels of total MYH14 protein.
Protein Pathways:	Regulation of actin cytoskeleton, Tight junction, Viral myocarditis



[View online »](#)

Product images:



Western blot analysis of extracts from 293 cells, using MYH14 antibody. The lane on the right is treated with the synthesized peptide.