

Product datasheet for **TA315800**

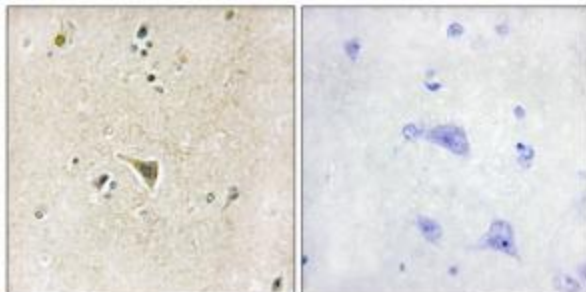
LRRK1 Rabbit Polyclonal Antibody

Product data:

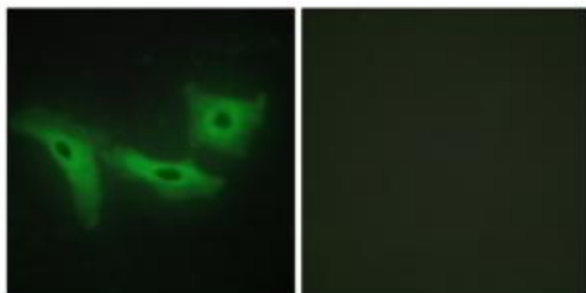
Product Type:	Primary Antibodies
Applications:	IF, IHC
Recommended Dilution:	IHC: 1:50~1:100, IF: 1:100~1:500, ELISA: 1:5000
Reactivity:	Human
Host:	Rabbit
Isotype:	IgG
Clonality:	Polyclonal
Immunogen:	The antiserum was produced against synthesized peptide derived from internal of human LRRK1.
Formulation:	Phosphate buffered saline (without Mg ²⁺ and Ca ²⁺), pH 7.4, 150mM NaCl, 0.02% sodium azide and 50% glycerol.
Concentration:	lot specific
Purification:	The antibody was affinity-purified from rabbit antiserum by affinity-chromatography using epitope-specific immunogen.
Conjugation:	Unconjugated
Storage:	Store at -20°C as received.
Stability:	Stable for 12 months from date of receipt.
Gene Name:	leucine-rich repeat kinase 1
Database Link:	NP_078928 Entrez Gene 79705 Human Q38SD2
Synonyms:	RIPK6; Roco1
Note:	LRRK1 antibody detects endogenous levels of total LRRK1 protein.
Protein Families:	Druggable Genome, Protein Kinase



[View online »](#)

Product images:

Immunohistochemistry analysis of paraffin-embedded human brain tissue, using LRRK1 antibody. The picture on the right is treated with the synthesized peptide.



Immunofluorescence analysis of HeLa cells, using LRRK1 antibody. The picture on the right is treated with the synthesized peptide.