

## Product datasheet for **TA315795**

### Tumor necrosis factor alpha induced protein 8 like protein 2 (TNFAIP8L2) Rabbit Polyclonal Antibody

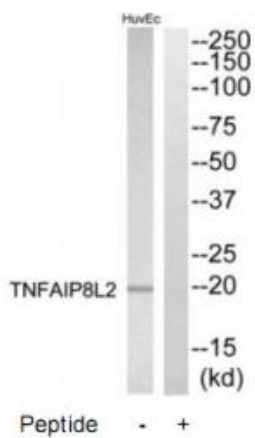
#### Product data:

Product Type:	Primary Antibodies
Applications:	WB
Recommended Dilution:	WB: 1:500~1:3000, IHC: 1:50~1:100, ELISA: 1:40000
Reactivity:	Mouse, Human, Rat
Host:	Rabbit
Isotype:	IgG
Clonality:	Polyclonal
Immunogen:	The antiserum was produced against synthesized peptide derived from internal of human TNFAIP8L2.
Formulation:	Phosphate buffered saline (without Mg <sup>2+</sup> and Ca <sup>2+</sup> ), pH 7.4, 150mM NaCl, 0.02% sodium azide and 50% glycerol.
Concentration:	lot specific
Purification:	The antibody was affinity-purified from rabbit antiserum by affinity-chromatography using epitope-specific immunogen.
Conjugation:	Unconjugated
Storage:	Store at -20°C as received.
Stability:	Stable for 12 months from date of receipt.
Gene Name:	TNF alpha induced protein 8 like 2
Database Link:	<a href="#">NP_078851</a> <a href="#">Entrez Gene 69769 Mouse</a> <a href="#">Entrez Gene 310663 Rat</a> <a href="#">Entrez Gene 79626 Human</a> <a href="#">Q6P589</a>
Synonyms:	TIPE2
Note:	TNFAIP8L2 antibody detects endogenous levels of total TNFAIP8L2 protein.



[View online »](#)

Product images:



Western blot analysis of extracts from HuvEc cells, using TNFAIP8L2 antibody. The lane on the right is treated with the synthesized peptide.