

Product datasheet for **TA315794**

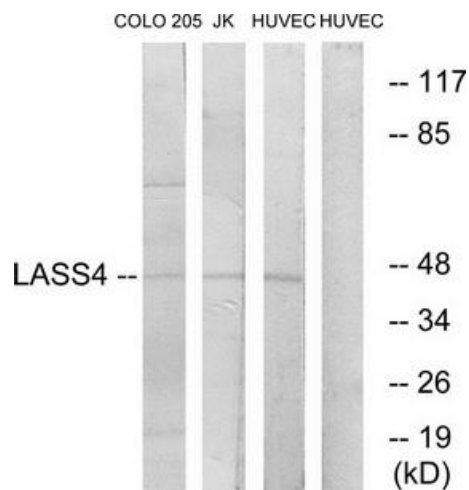
LASS4 (CERS4) Rabbit Polyclonal Antibody

Product data:

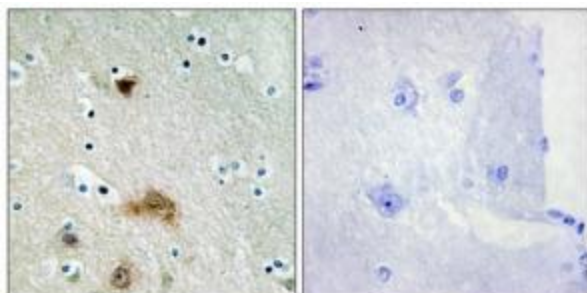
| | |
|-----------------------|--|
| Product Type: | Primary Antibodies |
| Applications: | IHC, WB |
| Recommended Dilution: | WB: 1:500~1:3000, IHC: 1:50~1:100, ELISA: 1:1000 |
| Reactivity: | Human, Mouse |
| Host: | Rabbit |
| Isotype: | IgG |
| Clonality: | Polyclonal |
| Immunogen: | The antiserum was produced against synthesized peptide derived from internal of human LASS4. |
| Formulation: | Phosphate buffered saline (without Mg ²⁺ and Ca ²⁺), pH 7.4, 150mM NaCl, 0.02% sodium azide and 50% glycerol. |
| Concentration: | lot specific |
| Purification: | The antibody was affinity-purified from rabbit antiserum by affinity-chromatography using epitope-specific immunogen. |
| Conjugation: | Unconjugated |
| Storage: | Store at -20°C as received. |
| Stability: | Stable for 12 months from date of receipt. |
| Gene Name: | ceramide synthase 4 |
| Database Link: | NP_078828 Entrez Gene 67260 Mouse Entrez Gene 79603 Human Q9HA82 |
| Synonyms: | LASS4; Trh1 |
| Note: | LASS4 antibody detects endogenous levels of total LASS4 protein. |
| Protein Families: | Transcription Factors, Transmembrane |



[View online »](#)

Product images:


Western blot analysis of extracts from COLO cells, Jurkat cells and HUVEC cells, using LASS4 antibody. The lane on the right is treated with the synthesized peptide.



Immunohistochemistry analysis of paraffin-embedded human brain tissue using LASS4 antibody. The picture on the right is treated with the synthesized peptide.