

## Product datasheet for **TA315791**

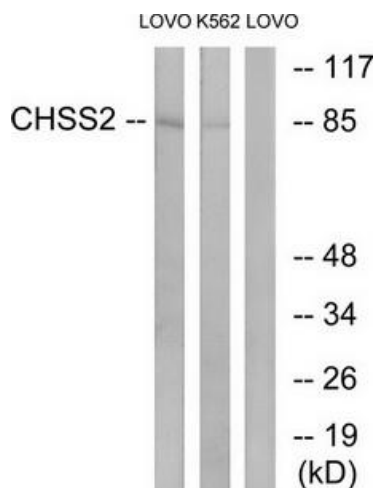
### CHPF Rabbit Polyclonal Antibody

#### Product data:

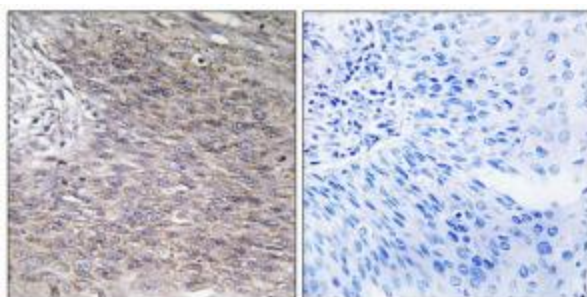
Product Type:	Primary Antibodies
Applications:	IF, IHC, WB
Recommended Dilution:	WB: 1:500~1:3000, IHC: 1:50~1:100
Reactivity:	Human, Mouse, Rat
Host:	Rabbit
Isotype:	IgG
Clonality:	Polyclonal
Immunogen:	The antiserum was produced against synthesized peptide derived from internal of human CHSS2.
Formulation:	Phosphate buffered saline (without Mg <sup>2+</sup> and Ca <sup>2+</sup> ), pH 7.4, 150mM NaCl, 0.02% sodium azide and 50% glycerol.
Concentration:	lot specific
Purification:	The antibody was affinity-purified from rabbit antiserum by affinity-chromatography using epitope-specific immunogen.
Conjugation:	Unconjugated
Storage:	Store at -20°C as received.
Stability:	Stable for 12 months from date of receipt.
Gene Name:	chondroitin polymerizing factor
Database Link:	<a href="#">NP_001182660</a> <a href="#">Entrez Gene 74241 MouseEntrez Gene 316533 RatEntrez Gene 79586 Human Q8IZ52</a>
Synonyms:	CHSY2; CSS2
Note:	CHSS2 antibody detects endogenous levels of total CHSS2 protein.
Protein Families:	Druggable Genome
Protein Pathways:	Chondroitin sulfate biosynthesis, Metabolic pathways



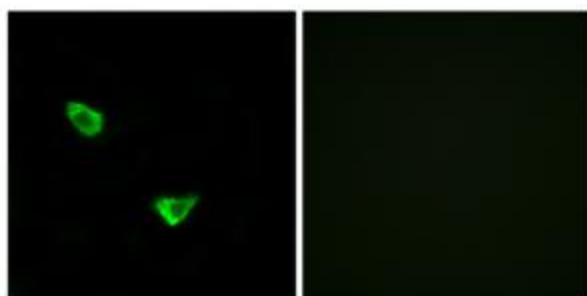
[View online »](#)

**Product images:**


Western blot analysis of extracts from LOVO cells and K562 cells, using CHSS2 antibody. The lane on the right is treated with the synthesized peptide.



Immunohistochemistry analysis of paraffin-embedded human cervix carcinoma tissue using CHSS2 antibody. The picture on the right is treated with the synthesized peptide.



Immunofluorescence analysis of MCF-7 cells, using CHSS2 antibody. The picture on the right is treated with the synthesized peptide.