

Product datasheet for **TA315779**

Htr5b Rabbit Polyclonal Antibody

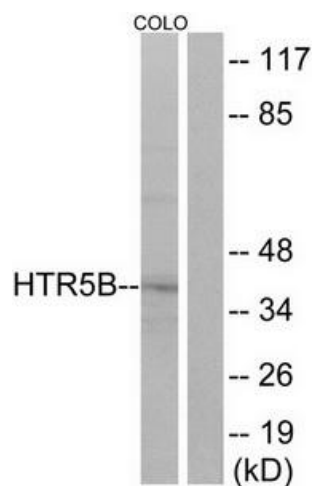
Product data:

| | |
|-----------------------|--|
| Product Type: | Primary Antibodies |
| Applications: | IF, WB |
| Recommended Dilution: | WB: 1:500~1:3000, IF: 1:100~1:500, ELISA: 1:40000 |
| Reactivity: | Mouse, Rat |
| Host: | Rabbit |
| Isotype: | IgG |
| Clonality: | Polyclonal |
| Immunogen: | The antiserum was produced against synthesized peptide derived from internal of human HTR5B. |
| Formulation: | Phosphate buffered saline (without Mg ²⁺ and Ca ²⁺), pH 7.4, 150mM NaCl, 0.02% sodium azide and 50% glycerol. |
| Concentration: | lot specific |
| Purification: | The antibody was affinity-purified from rabbit antiserum by affinity-chromatography using epitope-specific immunogen. |
| Conjugation: | Unconjugated |
| Storage: | Store at -20°C as received. |
| Stability: | Stable for 12 months from date of receipt. |
| Gene Name: | 5-hydroxytryptamine (serotonin) receptor 5B |
| Database Link: | NP_034613 Entrez Gene 79247 Rat Entrez Gene 15564 Mouse |
| Synonyms: | 5-HT5B; GPR134 |
| Note: | HTR5B antibody detects endogenous levels of total HTR5B protein. |

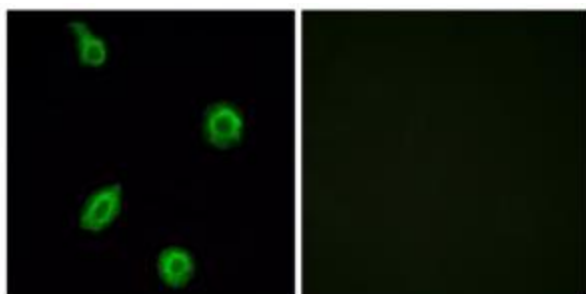


[View online »](#)

Product images:



Western blot analysis of extracts from COLO cells, using HTR5B antibody. The lane on the right is treated with the synthesized peptide.



Immunofluorescence analysis of HUVEC cells, using HTR5B antibody. The picture on the right is treated with the synthesized peptide.