

Product datasheet for **TA315775**

FKRP Rabbit Polyclonal Antibody

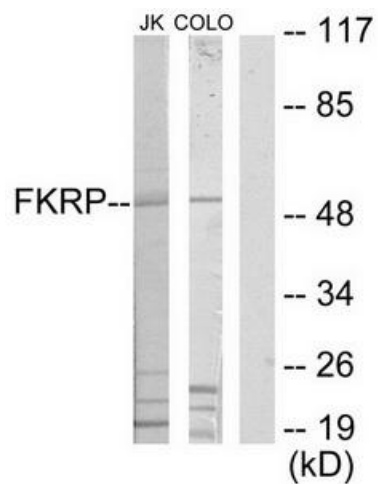
Product data:

Product Type:	Primary Antibodies
Applications:	WB
Recommended Dilution:	WB: 1:500~1:3000, ELISA: 1:20000
Reactivity:	Human, Mouse, Rat
Host:	Rabbit
Isotype:	IgG
Clonality:	Polyclonal
Immunogen:	The antiserum was produced against synthesized peptide derived from N-terminal of human FKRP.
Formulation:	Phosphate buffered saline (without Mg ²⁺ and Ca ²⁺), pH 7.4, 150mM NaCl, 0.02% sodium azide and 50% glycerol.
Concentration:	lot specific
Purification:	The antibody was affinity-purified from rabbit antiserum by affinity-chromatography using epitope-specific immunogen.
Conjugation:	Unconjugated
Storage:	Store at -20°C as received.
Stability:	Stable for 12 months from date of receipt.
Gene Name:	fukutin related protein
Database Link:	NP_001034974 Entrez Gene 243853 MouseEntrez Gene 308390 RatEntrez Gene 79147 Human Q9H9S5
Synonyms:	LGMD2I; MDC1C; MDDGA5; MDDGB5; MDDGC5
Note:	FKRP antibody detects endogenous levels of total FKRP protein.
Protein Families:	Transmembrane



[View online »](#)

Product images:



Western blot analysis of extracts from Jurkat cells and COLO205 cells, using FKRP antibody. The lane on the right is treated with the synthesized peptide.