

Product datasheet for **TA315772**

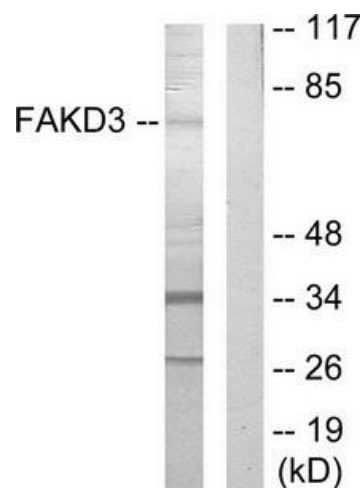
FASTKD3 Rabbit Polyclonal Antibody

Product data:

Product Type:	Primary Antibodies
Applications:	WB
Recommended Dilution:	WB: 1:500~1:3000, ELISA: 1:20000
Reactivity:	Human
Host:	Rabbit
Isotype:	IgG
Clonality:	Polyclonal
Immunogen:	The antiserum was produced against synthesized peptide derived from internal of human FAKD3.
Formulation:	Phosphate buffered saline (without Mg ²⁺ and Ca ²⁺), pH 7.4, 150mM NaCl, 0.02% sodium azide and 50% glycerol.
Concentration:	lot specific
Purification:	The antibody was affinity-purified from rabbit antiserum by affinity-chromatography using epitope-specific immunogen.
Conjugation:	Unconjugated
Storage:	Store at -20°C as received.
Stability:	Stable for 12 months from date of receipt.
Gene Name:	FAST kinase domains 3
Database Link:	NP_076996 Entrez Gene 79072 Human Q14CZ7
Synonyms:	FLJ23274; MGC5297; MGC142123
Note:	FAKD3 antibody detects endogenous levels of total FAKD3 protein.



[View online »](#)

Product images:


Western blot analysis of extracts from HepG2 cells, using FAKD3 antibody. The lane on the right is treated with the synthesized peptide.