

Product datasheet for **TA315762**

CDK15 Rabbit Polyclonal Antibody

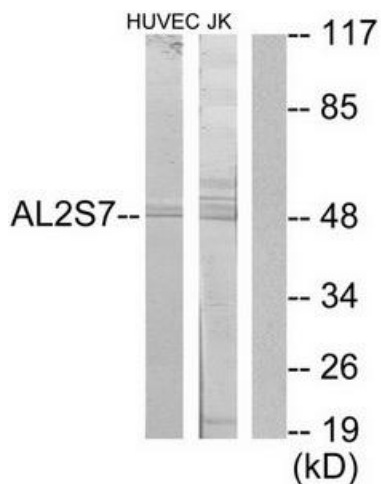
Product data:

Product Type:	Primary Antibodies
Applications:	WB
Recommended Dilution:	WB: 1:500~1:3000, ELISA: 1:5000
Reactivity:	Human, Mouse
Host:	Rabbit
Isotype:	IgG
Clonality:	Polyclonal
Immunogen:	he antiserum was produced against synthesized peptide derived from internal of human AL2S7.
Formulation:	Phosphate buffered saline (without Mg ²⁺ and Ca ²⁺), pH 7.4, 150mM NaCl, 0.02% sodium azide and 50% glycerol.
Concentration:	lot specific
Purification:	The antibody was affinity-purified from rabbit antiserum by affinity-chromatography using epitope-specific immunogen.
Conjugation:	Unconjugated
Storage:	Store at -20°C as received.
Stability:	Stable for 12 months from date of receipt.
Gene Name:	cyclin-dependent kinase 15
Database Link:	NP_631897 Entrez Gene 271697 Mouse Entrez Gene 65061 Human Q96Q40
Synonyms:	ALS2CR7; PFTAIRES2; PFTK2
Note:	AL2S7 antibody detects endogenous levels of total AL2S7 protein.
Protein Families:	Druggable Genome, Protein Kinase

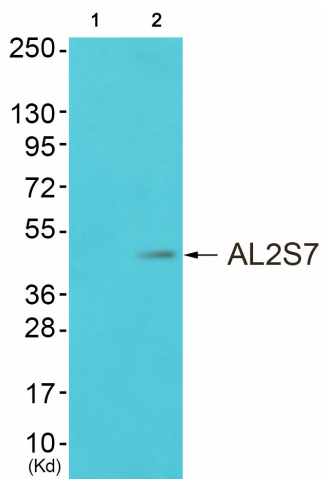


[View online »](#)

Product images:



Western blot analysis of extracts from HuvEc cells and Jurkat cells, using AL2S7 antibody. The lane on the right is treated with the synthesized peptide.



Western blot analysis of extracts from 3T3 cells (Lane 2), using AL2S7 Antibody. The lane on the left is treated with synthesized peptide.