

Product datasheet for **TA315761**

NDRG4 Rabbit Polyclonal Antibody

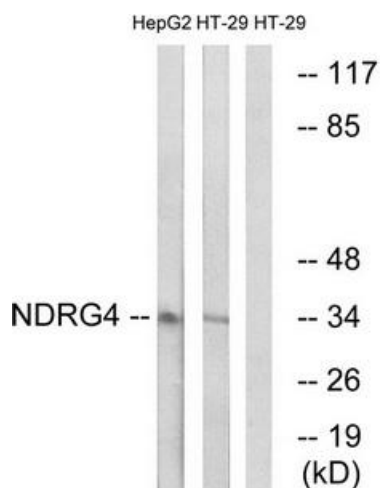
Product data:

Product Type:	Primary Antibodies
Applications:	IHC, WB
Recommended Dilution:	WB: 1:500~1:3000, IHC: 1:50~1:100, ELISA: 1:40000
Reactivity:	Human, Mouse, Rat
Host:	Rabbit
Isotype:	IgG
Clonality:	Polyclonal
Immunogen:	The antiserum was produced against synthesized peptide derived from internal of human NDRG4.
Formulation:	Phosphate buffered saline (without Mg ²⁺ and Ca ²⁺), pH 7.4, 150mM NaCl, 0.02% sodium azide and 50% glycerol.
Concentration:	lot specific
Purification:	The antibody was affinity-purified from rabbit antiserum by affinity-chromatography using epitope-specific immunogen.
Conjugation:	Unconjugated
Storage:	Store at -20°C as received.
Stability:	Stable for 12 months from date of receipt.
Gene Name:	NDRG family member 4
Database Link:	NP_001123959 Entrez Gene 64457 Rat Entrez Gene 234593 Mouse Entrez Gene 65009 Human Q9ULP0
Synonyms:	BDM1; SMAP-8; SMAP8
Note:	NDRG4 antibody detects endogenous levels of total NDRG4 protein.

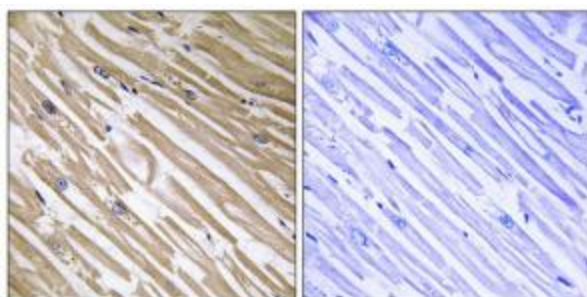


[View online »](#)

Product images:



Western blot analysis of extracts from HepG2 cells and HT-29 cells, using NDRG4 antibody. The lane on the right is treated with the synthesized peptide.



Immunohistochemistry analysis of paraffin-embedded human heart tissue using NDRG4 antibody. The picture on the right is treated with the synthesized peptide.