

Product datasheet for **TA315757**

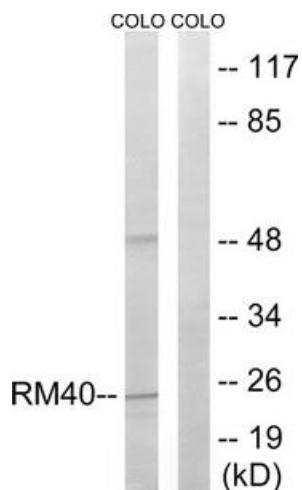
MRPL40 Rabbit Polyclonal Antibody

Product data:

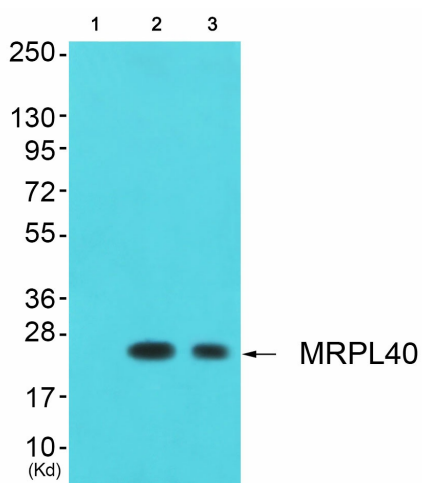
Product Type:	Primary Antibodies
Applications:	IHC, WB
Recommended Dilution:	WB: 1:500~1:3000, IHC: 1:50~1:100, ELISA: 1:40000
Reactivity:	Human
Host:	Rabbit
Isotype:	IgG
Clonality:	Polyclonal
Immunogen:	The antiserum was produced against synthesized peptide derived from internal of human MRPL40.
Formulation:	Phosphate buffered saline (without Mg ²⁺ and Ca ²⁺), pH 7.4, 150mM NaCl, 0.02% sodium azide and 50% glycerol.
Concentration:	lot specific
Purification:	The antibody was affinity-purified from rabbit antiserum by affinity-chromatography using epitope-specific immunogen.
Conjugation:	Unconjugated
Storage:	Store at -20°C as received.
Stability:	Stable for 12 months from date of receipt.
Gene Name:	mitochondrial ribosomal protein L40
Database Link:	NP_003767 Entrez Gene 64976 Human Q9NQ50
Synonyms:	MRP-L22; MRPL22; NLVCF; URIM
Note:	MRPL40 antibody detects endogenous levels of total MRPL40 protein.



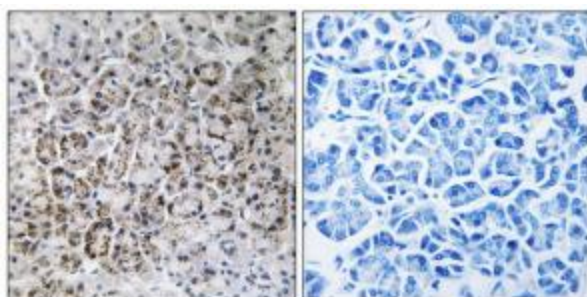
[View online »](#)

Product images:


Western blot analysis of extracts from COLO cells, using MRPL40 antibody. The lane on the right is treated with the synthesized peptide.



Western blot analysis of extracts from HuvEc cells (Lane 2) and HepG2 cells (Lane 3), using MRPL40 Antibody. The lane on the left is treated with synthesized peptide.



Immunohistochemistry analysis of paraffin-embedded human pancreas tissue using MRPL40 antibody. The picture on the right is treated with the synthesized peptide.