

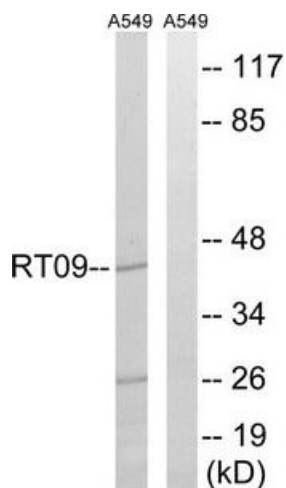
Product datasheet for **TA315755**

MRPS9 Rabbit Polyclonal Antibody

Product data:

Product Type:	Primary Antibodies
Applications:	WB
Recommended Dilution:	WB: 1:500~1:3000, ELISA: 1:40000
Reactivity:	Mouse, Rat, Human
Host:	Rabbit
Isotype:	IgG
Clonality:	Polyclonal
Immunogen:	The antiserum was produced against synthesized peptide derived from internal of human MRPS9.
Formulation:	Phosphate buffered saline (without Mg ²⁺ and Ca ²⁺), pH 7.4, 150mM NaCl, 0.02% sodium azide and 50% glycerol.
Concentration:	lot specific
Purification:	The antibody was affinity-purified from rabbit antiserum by affinity-chromatography using epitope-specific immunogen.
Conjugation:	Unconjugated
Storage:	Store at -20°C as received.
Stability:	Stable for 12 months from date of receipt.
Gene Name:	mitochondrial ribosomal protein S9
Database Link:	NP_872578 Entrez Gene 69527 MouseEntrez Gene 301371 RatEntrez Gene 64965 Human P82933
Synonyms:	MRP-S9; RPMS9; S9mt
Note:	MRPS9 antibody detects endogenous levels of total MRPS9 protein.

[View online »](#)

Product images:


Western blot analysis of extracts from A549 cells, using MRPS9 antibody. The lane on the right is treated with the synthesized peptide.