

Product datasheet for **TA315751**

RANBP17 Rabbit Polyclonal Antibody

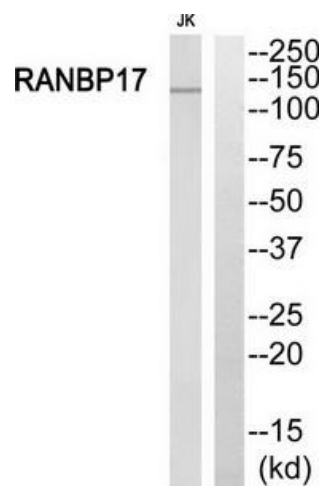
Product data:

Product Type:	Primary Antibodies
Applications:	WB
Recommended Dilution:	WB: 1:500~1:3000, ELISA: 1:20000
Reactivity:	Human, Mouse
Host:	Rabbit
Isotype:	IgG
Clonality:	Polyclonal
Immunogen:	The antiserum was produced against synthesized peptide derived from N-terminal of human RANBP17.
Formulation:	Phosphate buffered saline (without Mg ²⁺ and Ca ²⁺), pH 7.4, 150mM NaCl, 0.02% sodium azide and 50% glycerol.
Concentration:	lot specific
Purification:	The antibody was affinity-purified from rabbit antiserum by affinity-chromatography using epitope-specific immunogen.
Conjugation:	Unconjugated
Storage:	Store at -20°C as received.
Stability:	Stable for 12 months from date of receipt.
Gene Name:	RAN binding protein 17
Database Link:	NP_075048 Entrez Gene 66011 Mouse Entrez Gene 64901 Human Q9H2T7
Synonyms:	FLJ32916
Note:	RANBP17 antibody detects endogenous levels of total RANBP17 protein.



[View online »](#)

Product images:



Western blot analysis of extracts from Jurkat cells, using RANBP17 antibody. The lane on the right is treated with the synthesized peptide.