

Product datasheet for **TA315749**

Islet 2 (ISL2) Rabbit Polyclonal Antibody

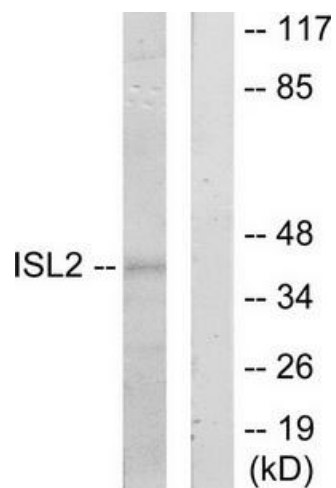
Product data:

Product Type:	Primary Antibodies
Applications:	WB
Recommended Dilution:	WB: 1:500~1:3000, ELISA: 1:20000
Reactivity:	Human, Mouse, Rat
Host:	Rabbit
Isotype:	IgG
Clonality:	Polyclonal
Immunogen:	The antiserum was produced against synthesized peptide derived from internal of human ISL2.
Formulation:	Phosphate buffered saline (without Mg ²⁺ and Ca ²⁺), pH 7.4, 150mM NaCl, 0.02% sodium azide and 50% glycerol.
Concentration:	lot specific
Purification:	The antibody was affinity-purified from rabbit antiserum by affinity-chromatography using epitope-specific immunogen.
Conjugation:	Unconjugated
Storage:	Store at -20°C as received.
Stability:	Stable for 12 months from date of receipt.
Gene Name:	ISL LIM homeobox 2
Database Link:	NP_665804 Entrez Gene 57233 Rat Entrez Gene 104360 Mouse Entrez Gene 64843 Human Q96A47
Synonyms:	FLJ10160
Note:	ISL2 antibody detects endogenous levels of total ISL2 protein.
Protein Families:	Transcription Factors



[View online »](#)

Product images:



Western blot analysis of extracts from 293 cells, using ISL2 antibody. The lane on the right is treated with the synthesized peptide.