

## Product datasheet for **TA315745**

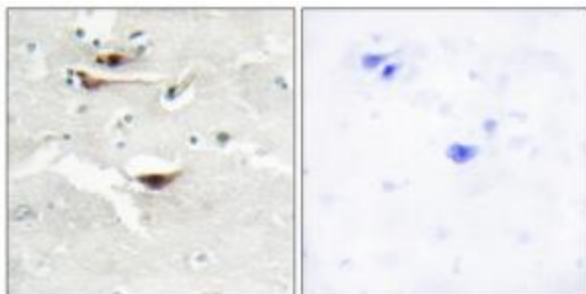
### IPPK Rabbit Polyclonal Antibody

#### Product data:

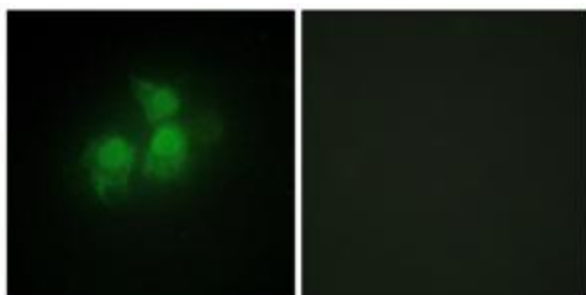
Product Type:	Primary Antibodies
Applications:	IF, IHC
Recommended Dilution:	IHC: 1:50~1:100, IF: 1:100~1:500, ELISA: 1:5000
Reactivity:	Human, Mouse, Rat
Host:	Rabbit
Isotype:	IgG
Clonality:	Polyclonal
Immunogen:	The antiserum was produced against synthesized peptide derived from internal of human IPPK.
Formulation:	Phosphate buffered saline (without Mg <sup>2+</sup> and Ca <sup>2+</sup> ), pH 7.4, 150mM NaCl, 0.02% sodium azide and 50% glycerol.
Concentration:	lot specific
Purification:	The antibody was affinity-purified from rabbit antiserum by affinity-chromatography using epitope-specific immunogen.
Conjugation:	Unconjugated
Storage:	Store at -20°C as received.
Stability:	Stable for 12 months from date of receipt.
Gene Name:	inositol-pentakisphosphate 2-kinase
Database Link:	<a href="#">NP_073592</a> <a href="#">Entrez Gene 75678 Mouse</a> <a href="#">Entrez Gene 306808 Rat</a> <a href="#">Entrez Gene 64768 Human</a> <a href="#">Q9H8X2</a>
Synonyms:	bA476B13.1; C9orf12; INSP5K2; IP5K; IPK1
Note:	IPPK antibody detects endogenous levels of total IPPK protein.
Protein Pathways:	Inositol phosphate metabolism, Metabolic pathways, Phosphatidylinositol signaling system



[View online »](#)

**Product images:**

Immunohistochemistry analysis of paraffin-embedded human brain tissue, using IPPK antibody. The picture on the right is treated with the synthesized peptide.



Immunofluorescence analysis of HepG2 cells, using IPPK antibody. The picture on the right is treated with the synthesized peptide.