

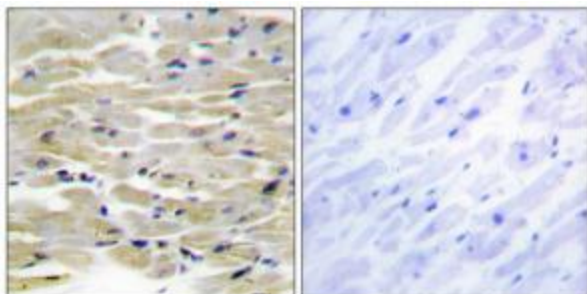
Product datasheet for **TA315743**

Tensin 3 (TNS3) Rabbit Polyclonal Antibody

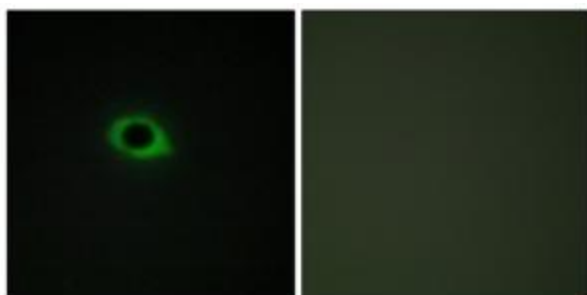
Product data:

Product Type:	Primary Antibodies
Applications:	IF, IHC
Recommended Dilution:	IHC: 1:50~1:100, IF: 1:100~1:500, ELISA: 1:1000
Reactivity:	Human
Host:	Rabbit
Isotype:	IgG
Clonality:	Polyclonal
Immunogen:	The antiserum was produced against synthesized peptide derived from internal of human TENS3.
Formulation:	Phosphate buffered saline (without Mg ²⁺ and Ca ²⁺), pH 7.4, 150mM NaCl, 0.02% sodium azide and 50% glycerol.
Concentration:	lot specific
Purification:	The antibody was affinity-purified from rabbit antiserum by affinity-chromatography using epitope-specific immunogen.
Conjugation:	Unconjugated
Storage:	Store at -20°C as received.
Stability:	Stable for 12 months from date of receipt.
Gene Name:	tensin 3
Database Link:	NP_073585 Entrez Gene 64759 Human Q68CZ2
Synonyms:	TEM6; TENS1
Note:	TENS3 antibody detects endogenous levels of total TENS3 protein.
Protein Families:	Druggable Genome

[View online »](#)

Product images:

Immunohistochemistry analysis of paraffin-embedded human heart tissue, using TENS3 antibody. The picture on the right is treated with the synthesized peptide.



Immunofluorescence analysis of COS-7 cells, using TENS3 antibody. The picture on the right is treated with the synthesized peptide.