

Product datasheet for **TA315740**

TMPRSS3 Rabbit Polyclonal Antibody

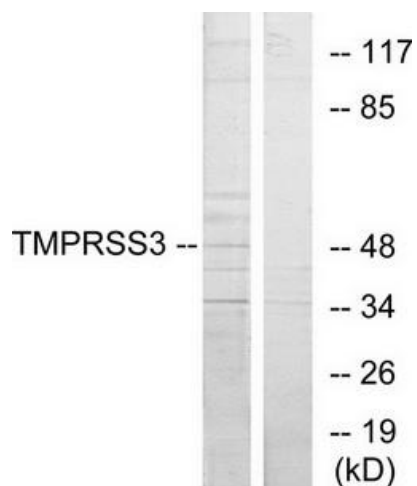
Product data:

Product Type:	Primary Antibodies
Applications:	IF, WB
Recommended Dilution:	WB: 1:500~1:3000, IF: 1:100~1:500, ELISA: 1:10000
Reactivity:	Human, Mouse
Host:	Rabbit
Isotype:	IgG
Clonality:	Polyclonal
Immunogen:	The antiserum was produced against synthesized peptide derived from C-terminal of human TMPRSS3.
Formulation:	Phosphate buffered saline (without Mg ²⁺ and Ca ²⁺), pH 7.4, 150mM NaCl, 0.02% sodium azide and 50% glycerol.
Concentration:	lot specific
Purification:	The antibody was affinity-purified from rabbit antiserum by affinity-chromatography using epitope-specific immunogen.
Conjugation:	Unconjugated
Storage:	Store at -20°C as received.
Stability:	Stable for 12 months from date of receipt.
Gene Name:	transmembrane protease, serine 3
Database Link:	NP_115777 Entrez Gene 140765 Mouse Entrez Gene 64699 Human P57727
Synonyms:	DFNB8; DFNB10; ECHOS1; OTTHUMP00000109345; serine 3; serine protease TADG12; TADG12; transmembrane protease
Note:	TMPRSS3 antibody detects endogenous levels of total TMPRSS3 protein.
Protein Families:	Druggable Genome, Protease, Transmembrane

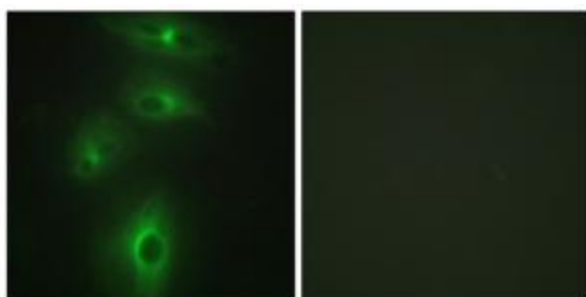


[View online »](#)

Product images:



Western blot analysis of extracts from HUVEC cells, using TMPRSS3 antibody. The lane on the right is treated with the synthesized peptide.



Immunofluorescence analysis of HeLa cells, using TMPRSS3 antibody. The picture on the right is treated with the synthesized peptide.