

Product datasheet for **TA315739**

Apc1 (ANAPC1) Rabbit Polyclonal Antibody

Product data:

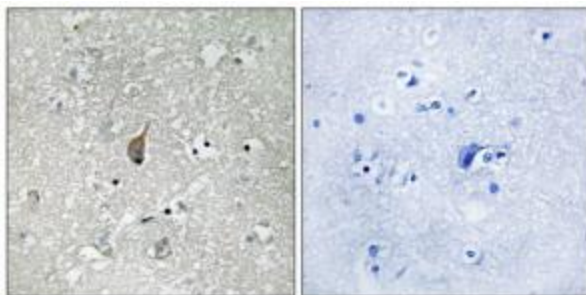
Product Type:	Primary Antibodies
Applications:	IHC
Recommended Dilution:	IHC: 1:50~1:100, ELISA: 1:1000
Reactivity:	Human, Mouse
Modifications:	Phospho-specific
Host:	Rabbit
Isotype:	IgG
Clonality:	Polyclonal
Immunogen:	The antiserum was produced against synthesized phosphopeptide derived from human APC1 around the phosphorylation site of serine 355 (A-H-SP-P-A).
Formulation:	Phosphate buffered saline (without Mg ²⁺ and Ca ²⁺), pH 7.4, 150mM NaCl, 0.02% sodium azide and 50% glycerol.
Concentration:	lot specific
Purification:	The antibody was affinity-purified from rabbit antiserum by affinity-chromatography using epitope-specific immunogen.
Conjugation:	Unconjugated
Storage:	Store at -20°C as received.
Stability:	Stable for 12 months from date of receipt.
Gene Name:	anaphase promoting complex subunit 1
Database Link:	NP_073153 Entrez Gene 17222 Mouse Entrez Gene 64682 Human Q9H1A4
Synonyms:	APC1; MCPR; TSG24
Note:	APC1 (Phospho-Ser355) antibody detects endogenous levels of APC1 only when phosphorylated at serine 355.
Protein Families:	Druggable Genome, Stem cell - Pluripotency



[View online »](#)

Protein Pathways: Cell cycle, Oocyte meiosis, Progesterone-mediated oocyte maturation, Ubiquitin mediated proteolysis

Product images:



Immunohistochemistry analysis of paraffin-embedded human brain tissue using APC1 (Phospho-Ser355) antibody. The picture on the right is treated with the synthesized peptide.