

Product datasheet for **TA315736**

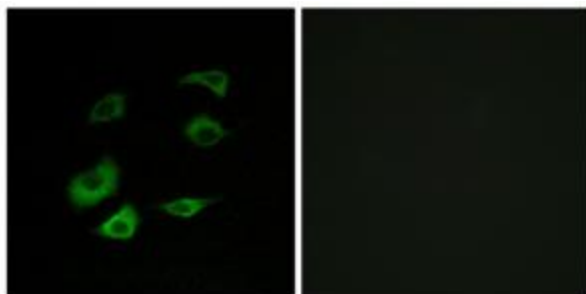
Apc1 (ANAPC1) Rabbit Polyclonal Antibody

Product data:

Product Type:	Primary Antibodies
Applications:	IF
Recommended Dilution:	IF: 1:100~1:500, ELISA: 1:10000
Reactivity:	Human, Mouse
Host:	Rabbit
Isotype:	IgG
Clonality:	Polyclonal
Immunogen:	The antiserum was produced against synthesized peptide derived from internal of human Cyclosome 1.
Formulation:	Phosphate buffered saline (without Mg ²⁺ and Ca ²⁺), pH 7.4, 150mM NaCl, 0.02% sodium azide and 50% glycerol.
Concentration:	lot specific
Purification:	The antibody was affinity-purified from rabbit antiserum by affinity-chromatography using epitope-specific immunogen.
Conjugation:	Unconjugated
Storage:	Store at -20°C as received.
Stability:	Stable for 12 months from date of receipt.
Gene Name:	anaphase promoting complex subunit 1
Database Link:	NP_073153 Entrez Gene 17222 Mouse Entrez Gene 64682 Human Q9H1A4
Synonyms:	APC1; MCPR; TSG24
Note:	Cyclosome 1 antibody detects endogenous levels of total Cyclosome 1 protein.
Protein Families:	Druggable Genome, Stem cell - Pluripotency
Protein Pathways:	Cell cycle, Oocyte meiosis, Progesterone-mediated oocyte maturation, Ubiquitin mediated proteolysis



[View online »](#)

Product images:

Immunofluorescence analysis of HepG2 cells, using Cyclosome 1 antibody. The picture on the right is treated with the synthesized peptide.