

Product datasheet for **TA315733**

CIAO3 Rabbit Polyclonal Antibody

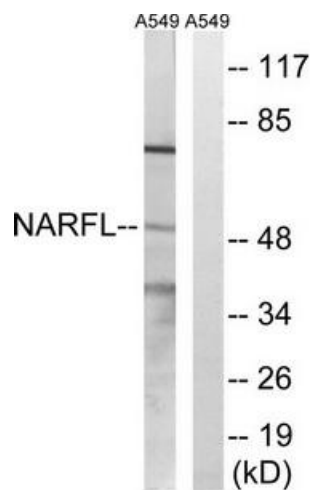
Product data:

Product Type:	Primary Antibodies
Applications:	WB
Recommended Dilution:	WB: 1:500~1:3000, ELISA: 1:40000
Reactivity:	Human
Host:	Rabbit
Isotype:	IgG
Clonality:	Polyclonal
Immunogen:	The antiserum was produced against synthesized peptide derived from internal of human NARFL.
Formulation:	Phosphate buffered saline (without Mg ²⁺ and Ca ²⁺), pH 7.4, 150mM NaCl, 0.02% sodium azide and 50% glycerol.
Concentration:	lot specific
Purification:	The antibody was affinity-purified from rabbit antiserum by affinity-chromatography using epitope-specific immunogen.
Conjugation:	Unconjugated
Storage:	Store at -20°C as received.
Stability:	Stable for 12 months from date of receipt.
Gene Name:	nuclear prelamin A recognition factor like
Database Link:	NP_071938 Entrez Gene 64428 Human Q9H6Q4
Synonyms:	HPRN; IOP1; LET1L; NAR1; PRN
Note:	NARFL antibody detects endogenous levels of total NARFL protein



[View online »](#)

Product images:



Western blot analysis of extracts from A549 cells, using NARFL antibody. The lane on the right is treated with the synthesized peptide.