

Product datasheet for **TA315730**

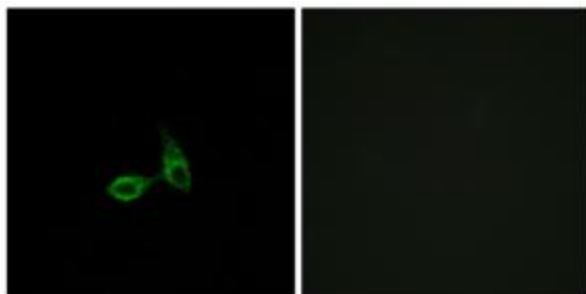
Cadherin 24 (CDH24) Rabbit Polyclonal Antibody

Product data:

Product Type:	Primary Antibodies
Applications:	IF
Recommended Dilution:	IF: 1:100~1:500, ELISA: 1:10000
Reactivity:	Human, Mouse
Host:	Rabbit
Isotype:	IgG
Clonality:	Polyclonal
Immunogen:	The antiserum was produced against synthesized peptide derived from internal of human CDH24.
Formulation:	Phosphate buffered saline (without Mg ²⁺ and Ca ²⁺), pH 7.4, 150mM NaCl, 0.02% sodium azide and 50% glycerol.
Concentration:	lot specific
Purification:	The antibody was affinity-purified from rabbit antiserum by affinity-chromatography using epitope-specific immunogen.
Conjugation:	Unconjugated
Storage:	Store at -20°C as received.
Stability:	Stable for 12 months from date of receipt.
Gene Name:	cadherin 24
Database Link:	NP_071923 Entrez Gene 239096 Mouse Entrez Gene 64403 Human Q86UP0
Synonyms:	CDH11L
Note:	CDH24 antibody detects endogenous levels of total CDH24 protein.
Protein Families:	Transmembrane



[View online »](#)

Product images:

Immunofluorescence analysis of HepG2 cells, using CDH24 antibody. The picture on the right is treated with the synthesized peptide.