

## Product datasheet for **TA315724**

### **COP1 (RFWD2) Rabbit Polyclonal Antibody**

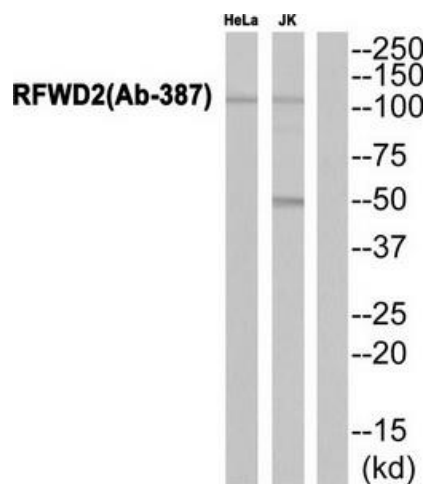
#### **Product data:**

<b>Product Type:</b>	Primary Antibodies
<b>Applications:</b>	WB
<b>Recommended Dilution:</b>	WB: 1:500~1:3000, ELISA: 1:40000
<b>Reactivity:</b>	Human, Mouse
<b>Host:</b>	Rabbit
<b>Isotype:</b>	IgG
<b>Clonality:</b>	Polyclonal
<b>Immunogen:</b>	The antiserum was produced against synthesized non-phosphopeptide derived from human RFWD2 around the phosphorylation site of serine 387 (T-A-SP-Q-L).
<b>Formulation:</b>	Phosphate buffered saline (without Mg <sup>2+</sup> and Ca <sup>2+</sup> ), pH 7.4, 150mM NaCl, 0.02% sodium azide and 50% glycerol.
<b>Concentration:</b>	lot specific
<b>Purification:</b>	The antibody was affinity-purified from rabbit antiserum by affinity-chromatography using epitope-specific immunogen.
<b>Conjugation:</b>	Unconjugated
<b>Storage:</b>	Store at -20°C as received.
<b>Stability:</b>	Stable for 12 months from date of receipt.
<b>Gene Name:</b>	ring finger and WD repeat domain 2
<b>Database Link:</b>	<a href="#">NP_001001740</a> <a href="#">Entrez Gene 26374 Mouse</a> <a href="#">Entrez Gene 64326 Human</a> <a href="#">Q8NHY2</a>
<b>Synonyms:</b>	COP1; RNF200
<b>Note:</b>	RFWD2 (Ab-387) antibody detects endogenous levels of total RFWD2 protein.
<b>Protein Pathways:</b>	p53 signaling pathway, Ubiquitin mediated proteolysis



[View online »](#)

## Product images:



Western blot analysis of extracts from 3T3 cells, using RFWD2 (Ab-387) antibody. The lane on the right is treated with the synthesized peptide.