

Product datasheet for **TA315722**

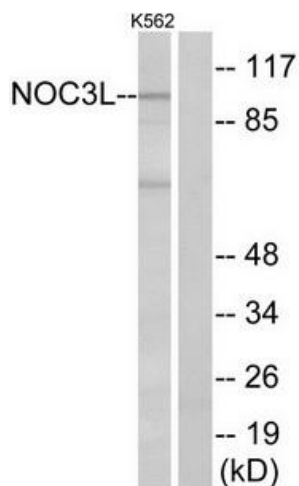
NOC3L Rabbit Polyclonal Antibody

Product data:

Product Type:	Primary Antibodies
Applications:	WB
Recommended Dilution:	WB: 1:500~1:3000, ELISA: 1:40000
Reactivity:	Human, Mouse
Host:	Rabbit
Isotype:	IgG
Clonality:	Polyclonal
Immunogen:	The antiserum was produced against synthesized peptide derived from internal of human NOC3L.
Formulation:	Phosphate buffered saline (without Mg ²⁺ and Ca ²⁺), pH 7.4, 150mM NaCl, 0.02% sodium azide and 50% glycerol.
Concentration:	lot specific
Purification:	The antibody was affinity-purified from rabbit antiserum by affinity-chromatography using epitope-specific immunogen.
Conjugation:	Unconjugated
Storage:	Store at -20°C as received.
Stability:	Stable for 12 months from date of receipt.
Gene Name:	NOC3 like DNA replication regulator
Database Link:	NP_071896 Entrez Gene 57753 Mouse Entrez Gene 64318 Human Q8WTT2
Synonyms:	AD24; C10orf117; FAD24
Note:	NOC3L antibody detects endogenous levels of total NOC3L protein

[View online »](#)

Product images:



Western blot analysis of extracts from K562 cells, using NOC3L antibody. The lane on the right is treated with the synthesized peptide.