

Product datasheet for **TA315711**

Neuronal calcium binding protein (NECAB3) Rabbit Polyclonal Antibody

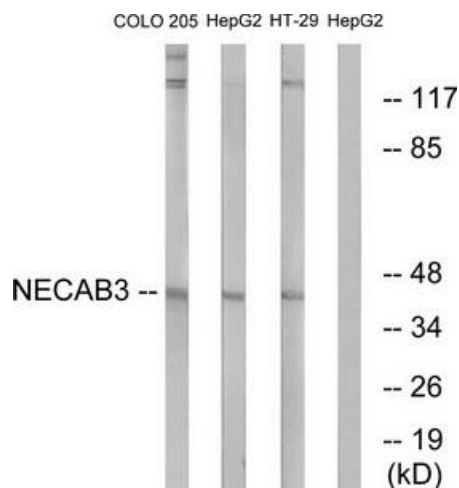
Product data:

Product Type:	Primary Antibodies
Applications:	IF, WB
Recommended Dilution:	WB: 1:500~1:3000, IF: 1:100~1:500, ELISA: 1:10000
Reactivity:	Human, Mouse
Host:	Rabbit
Isotype:	IgG
Clonality:	Polyclonal
Immunogen:	The antiserum was produced against synthesized peptide derived from internal of human NECAB3.
Formulation:	Phosphate buffered saline (without Mg ²⁺ and Ca ²⁺), pH 7.4, 150mM NaCl, 0.02% sodium azide and 50% glycerol.
Concentration:	lot specific
Purification:	The antibody was affinity-purified from rabbit antiserum by affinity-chromatography using epitope-specific immunogen.
Conjugation:	Unconjugated
Storage:	Store at -20°C as received.
Stability:	Stable for 12 months from date of receipt.
Gene Name:	N-terminal EF-hand calcium binding protein 3
Database Link:	NP_112508 Entrez Gene 56846 Mouse Entrez Gene 63941 Human Q96P71
Synonyms:	APBA2BP; dj63M2.4; dj63M2.5; EFCBP3; NIP1; STIP3; SYTIP2; XB51
Note:	NECAB3 antibody detects endogenous levels of total NECAB3 protein.

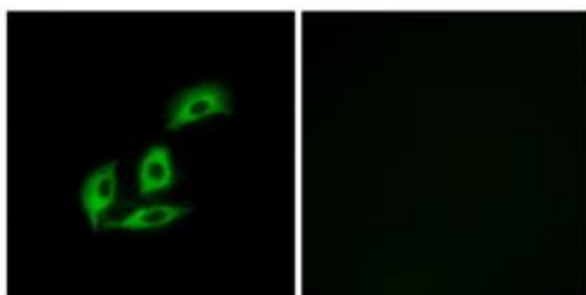


[View online »](#)

Product images:



Western blot analysis of extracts from COLO cells, HepG2 cells and HT-29 cells, using NECAB3 antibody. The lane on the right is treated with the synthesized peptide.



Immunofluorescence analysis of A549 cells, using NECAB3 antibody. The picture on the right is treated with the synthesized peptide.