

## Product datasheet for **TA315701**

### TRM11 (TRMT11) Rabbit Polyclonal Antibody

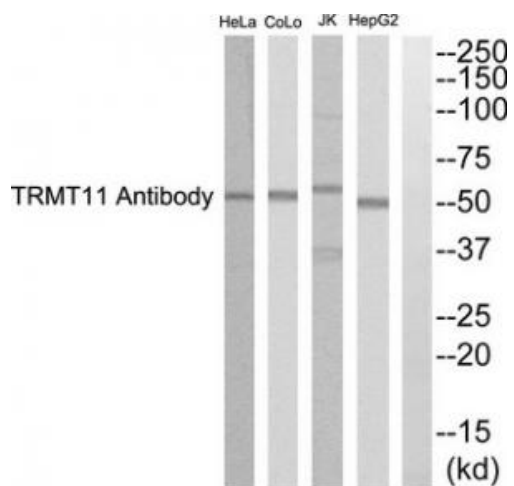
#### Product data:

Product Type:	Primary Antibodies
Applications:	WB
Recommended Dilution:	WB: 1:500~1:3000, ELISA: 1:10000
Reactivity:	Human
Host:	Rabbit
Isotype:	IgG
Clonality:	Polyclonal
Immunogen:	The antiserum was produced against synthesized peptide derived from Internal of human TRMT11.
Formulation:	Phosphate buffered saline (without Mg <sup>2+</sup> and Ca <sup>2+</sup> ), pH 7.4, 150mM NaCl, 0.02% sodium azide and 50% glycerol.
Concentration:	lot specific
Purification:	The antibody was affinity-purified from rabbit antiserum by affinity-chromatography using epitope-specific immunogen.
Conjugation:	Unconjugated
Storage:	Store at -20°C as received.
Stability:	Stable for 12 months from date of receipt.
Gene Name:	tRNA methyltransferase 11 homolog
Database Link:	<a href="#">NP_001026882</a> <a href="#">Entrez Gene 60487 Human</a> <a href="#">Q7Z4G4</a>
Synonyms:	C6orf75; MDS024; TRM11; TRMT11-1
Note:	TRMT11 Antibody detects endogenous levels of total TRMT11 protein
Protein Pathways:	Androgen and estrogen metabolism, Histidine metabolism, Selenoamino acid metabolism, Tyrosine metabolism



[View online »](#)

## Product images:



Western blot analysis of extracts from HepG2 cells, JK cells, Colo cells and Hela cells, using TRMT11 Antibody. The lane on the right is treated with the synthesized peptide.