

Product datasheet for **TA315693**

CACNG7 Rabbit Polyclonal Antibody

Product data:

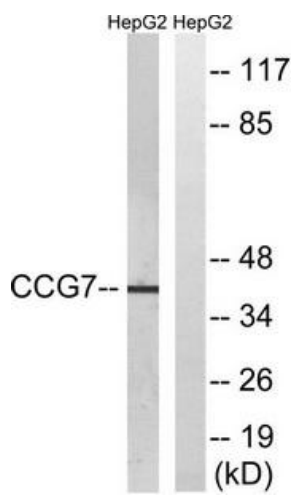
Product Type:	Primary Antibodies
Applications:	WB
Recommended Dilution:	WB: 1:500~1:3000, ELISA: 1:20000
Reactivity:	Human, Mouse, Rat
Host:	Rabbit
Isotype:	IgG
Clonality:	Polyclonal
Immunogen:	The antiserum was produced against synthesized peptide derived from internal of human CACNG7.
Formulation:	Phosphate buffered saline (without Mg ²⁺ and Ca ²⁺), pH 7.4, 150mM NaCl, 0.02% sodium azide and 50% glycerol.
Concentration:	lot specific
Purification:	The antibody was affinity-purified from rabbit antiserum by affinity-chromatography using epitope-specific immunogen.
Conjugation:	Unconjugated
Storage:	Store at -20°C as received.
Stability:	Stable for 12 months from date of receipt.
Gene Name:	calcium voltage-gated channel auxiliary subunit gamma 7
Database Link:	NP_114102 Entrez Gene 81904 MouseEntrez Gene 140728 RatEntrez Gene 59284 Human P62955
Synonyms:	calcium channel; gamma subunit 7; neuronal voltage-gated calcium channel gamma-7 subunit; OTTHUMP00000067298; voltage-dependent; voltage-dependent calcium channel gamma-7 subunit
Note:	CACNG7 antibody detects endogenous levels of total CACNG7 protein.
Protein Families:	Druggable Genome, Ion Channels: Other, Transmembrane



[View online »](#)

Protein Pathways: Arrhythmogenic right ventricular cardiomyopathy (ARVC), Cardiac muscle contraction, Dilated cardiomyopathy, Hypertrophic cardiomyopathy (HCM), MAPK signaling pathway

Product images:



Western blot analysis of extracts from HepG2 cells, using CACNG7 antibody. The lane on the right is treated with the synthesized peptide.