

## Product datasheet for **TA315690**

### Zhangfei (CREBZF) Rabbit Polyclonal Antibody

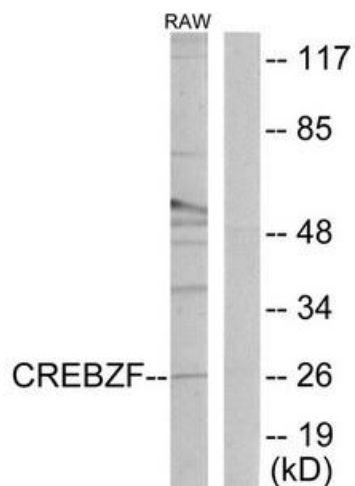
#### Product data:

Product Type:	Primary Antibodies
Applications:	IF, WB
Recommended Dilution:	WB: 1:500~1:3000, IF: 1:100~1:500, ELISA: 1:5000
Reactivity:	Human, Mouse
Host:	Rabbit
Isotype:	IgG
Clonality:	Polyclonal
Immunogen:	The antiserum was produced against synthesized peptide derived from internal of human CREBZF.
Formulation:	Phosphate buffered saline (without Mg <sup>2+</sup> and Ca <sup>2+</sup> ), pH 7.4, 150mM NaCl, 0.02% sodium azide and 50% glycerol.
Concentration:	lot specific
Purification:	The antibody was affinity-purified from rabbit antiserum by affinity-chromatography using epitope-specific immunogen.
Conjugation:	Unconjugated
Storage:	Store at -20°C as received.
Stability:	Stable for 12 months from date of receipt.
Gene Name:	CREB/ATF bZIP transcription factor
Database Link:	<a href="#">NP_001034707</a> <a href="#">Entrez Gene 233490 Mouse</a> <a href="#">Entrez Gene 58487 Human</a> <a href="#">Q9NS37</a>
Synonyms:	SMILE; ZF
Note:	CREBZF antibody detects endogenous levels of total CREBZF protein.
Protein Families:	Transcription Factors

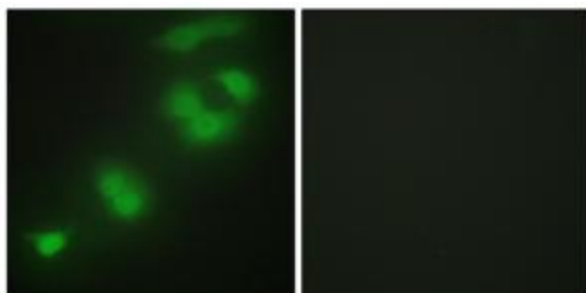


[View online »](#)

Product images:



Western blot analysis of extracts from RAW264.7 cells, using CREBZF antibody. The lane on the right is treated with the synthesized peptide.



Immunofluorescence analysis of HepG2 cells, using CREBZF antibody. The picture on the right is treated with the synthesized peptide.