

Product datasheet for **TA315685**

KIAA1967 (CCAR2) Rabbit Polyclonal Antibody

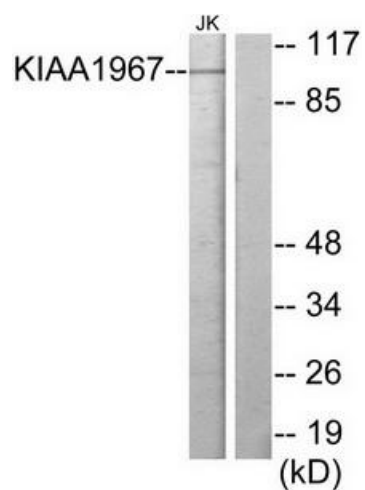
Product data:

Product Type:	Primary Antibodies
Applications:	WB
Recommended Dilution:	WB: 1:500~1:3000, ELISA: 1:20000
Reactivity:	Human
Host:	Rabbit
Isotype:	IgG
Clonality:	Polyclonal
Immunogen:	The antiserum was produced against synthesized peptide derived from internal of human KIAA1967.
Formulation:	Phosphate buffered saline (without Mg ²⁺ and Ca ²⁺), pH 7.4, 150mM NaCl, 0.02% sodium azide and 50% glycerol.
Concentration:	lot specific
Purification:	The antibody was affinity-purified from rabbit antiserum by affinity-chromatography using epitope-specific immunogen.
Conjugation:	Unconjugated
Storage:	Store at -20°C as received.
Stability:	Stable for 12 months from date of receipt.
Gene Name:	cell cycle and apoptosis regulator 2
Database Link:	NP_066997 Entrez Gene 57805 Human Q8N163
Synonyms:	DBC-1; DBC1; KIAA1967; NET35; p30 DBC; p30DBC
Note:	KIAA1967 antibody detects endogenous levels of total KIAA1967 protein.



[View online »](#)

Product images:



Western blot analysis of extracts from Jurkat cells, using KIAA1967 antibody. The lane on the right is treated with the synthesized peptide.