

Product datasheet for **TA315678**

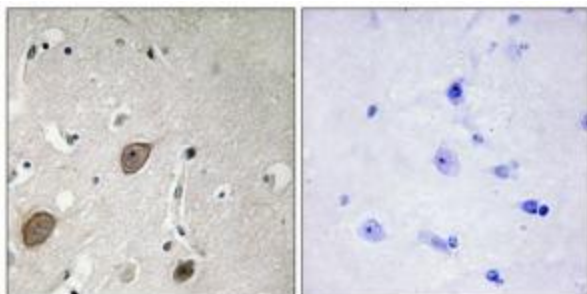
BEGAIN Rabbit Polyclonal Antibody

Product data:

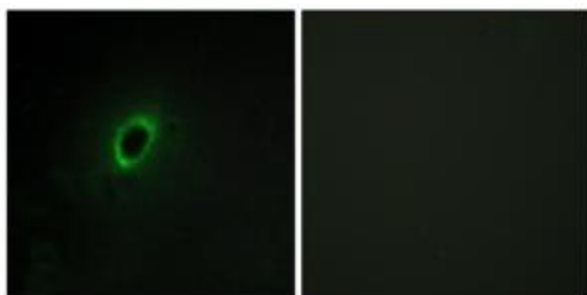
Product Type:	Primary Antibodies
Applications:	IF, IHC
Recommended Dilution:	IHC: 1:50~1:100, IF: 1:100~1:500, ELISA: 1:1000
Reactivity:	Human, Mouse, Rat
Host:	Rabbit
Isotype:	IgG
Clonality:	Polyclonal
Immunogen:	The antiserum was produced against synthesized peptide derived from internal of human BEGIN.
Formulation:	Phosphate buffered saline (without Mg ²⁺ and Ca ²⁺), pH 7.4, 150mM NaCl, 0.02% sodium azide and 50% glycerol.
Concentration:	lot specific
Purification:	The antibody was affinity-purified from rabbit antiserum by affinity-chromatography using epitope-specific immunogen.
Conjugation:	Unconjugated
Storage:	Store at -20°C as received.
Stability:	Stable for 12 months from date of receipt.
Gene Name:	brain enriched guanylate kinase associated
Database Link:	NP_065887 Entrez Gene 79146 Rat Entrez Gene 380785 Mouse Entrez Gene 57596 Human Q9BUH8
Synonyms:	KIAA1446
Note:	BEGIN antibody detects endogenous levels of total BEGIN protein.
Protein Families:	Druggable Genome



[View online »](#)

Product images:

Immunohistochemistry analysis of paraffin-embedded human breast carcinoma tissue, using BEGAIN antibody. The picture on the right is treated with the synthesized peptide.



Immunofluorescence analysis of HeLa cells, using BEGAIN antibody. The picture on the right is treated with the synthesized peptide.