

Product datasheet for **TA315674**

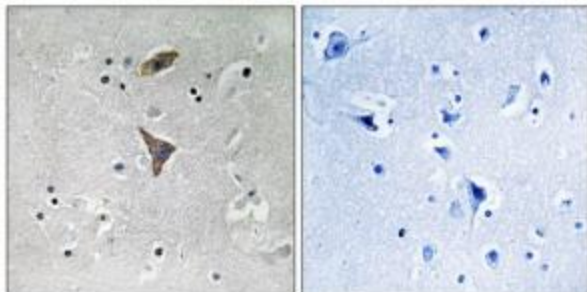
KCNT1 Rabbit Polyclonal Antibody

Product data:

Product Type:	Primary Antibodies
Applications:	IHC
Recommended Dilution:	IHC: 1:50~1:100, ELISA: 1:10000
Reactivity:	Human, Mouse, Rat
Host:	Rabbit
Isotype:	IgG
Clonality:	Polyclonal
Immunogen:	The antiserum was produced against synthesized peptide derived from C-terminal of human KCNT1.
Formulation:	Phosphate buffered saline (without Mg ²⁺ and Ca ²⁺), pH 7.4, 150mM NaCl, 0.02% sodium azide and 50% glycerol.
Concentration:	lot specific
Purification:	The antibody was affinity-purified from rabbit antiserum by affinity-chromatography using epitope-specific immunogen.
Conjugation:	Unconjugated
Storage:	Store at -20°C as received.
Stability:	Stable for 12 months from date of receipt.
Gene Name:	potassium sodium-activated channel subfamily T member 1
Database Link:	NP_065873 Entrez Gene 60444 Rat Entrez Gene 227632 Mouse Entrez Gene 57582 Human Q5JUK3
Synonyms:	bA100C15.2; EIEE14; ENFL5; KCa4.1; SLACK; Slo2.2
Note:	KCNT1 antibody detects endogenous levels of total KCNT1 protein.
Protein Families:	Druggable Genome, Ion Channels: Potassium, Transmembrane



[View online »](#)

Product images:

Immunohistochemistry analysis of paraffin-embedded human brain tissue using KCNT1 antibody. The picture on the right is treated with the synthesized peptide.